

Synonym

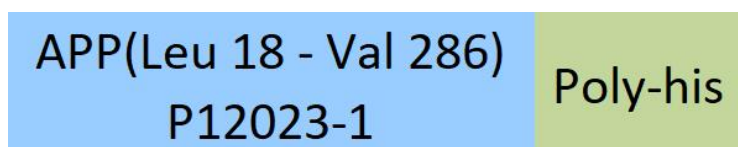
ABPP, APPI, Amyloid-beta A4 protein

Source

Mouse N-APP, His Tag (APP-M52H3) is expressed from human 293 cells (HEK293). It contains AA Leu 18 - Val 286 (Accession # [P12023-1](#)).

Predicted N-terminus: Leu 18

Molecular Characterization



This protein carries a polyhistidine tag at the C-terminus.

The protein has a calculated MW of 31.9 kDa. The protein migrates as 38-45 kDa under reducing (R) condition (SDS-PAGE) due to glycosylation.

Endotoxin

Less than 1.0 EU per µg by the LAL method.

Purity

>95% as determined by SDS-PAGE.

>90% as determined by SEC-MALS.

Formulation

Lyophilized from 0.22 µm filtered solution in PBS, pH7.4. Normally trehalose is added as protectant before lyophilization.

Contact us for customized product form or formulation.

Reconstitution

Please see Certificate of Analysis for specific instructions.

For best performance, we strongly recommend you to follow the reconstitution protocol provided in the CoA.

Storage

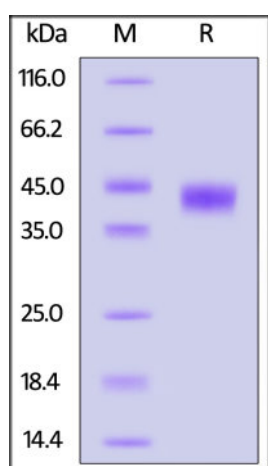
For long term storage, the product should be stored at lyophilized state at -20°C or lower.

Please avoid repeated freeze-thaw cycles.

This product is stable after storage at:

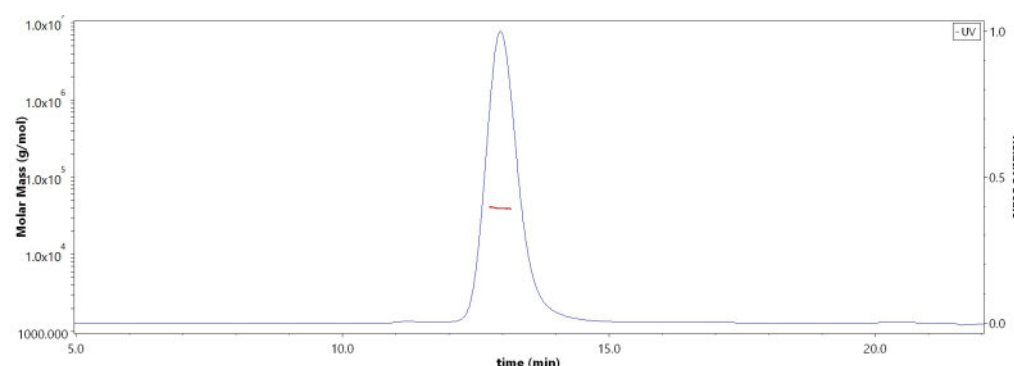
- -20°C to -70°C for 12 months in lyophilized state;
- -70°C for 3 months under sterile conditions after reconstitution.

SDS-PAGE



Mouse N-APP, His Tag on SDS-PAGE under reducing (R) condition. The gel was stained overnight with Coomassie Blue. The purity of the protein is greater than 95%.

SEC-MALS



The purity of Mouse N-APP, His Tag (Cat. No. APP-M52H3) is more than 90% and the molecular weight of this protein is around 30-45 kDa verified by SEC-MALS.

[Report](#)

Background

Amyloid precursor protein (APP) is a type I integral membrane protein ubiquitously expressed in many tissues and concentrated in the synapses of neurons. The majority of APP is cleaved at the plasma membrane by the α-secretase in the non-amyloidogenic pathway. The amyloidogenic pathway starts with β-secretase

cleavage by BACE1 on the N-terminal part of the A β domain, releasing sAPP β from a membrane-anchored fragment named β CTF or C102, which is subsequently cleaved by γ -secretase to release A β .

Clinical and Translational Updates

Please contact us via TechSupport@acrobiosystems.com if you have any question on this product.