

Synonym

CA125,CA-125,CA125MUC-16,FLJ14303,MUC16,mucin 16,mucin-16

Source

Rhesus macaque CA125 (12664-12920), His Tag(CA5-R52H3) is expressed from human 293 cells (HEK293). It contains AA Gly 12664 - Val 12920 (Accession # [XP_015296314.1](#)).
 Predicted N-terminus: Gly 12664

Molecular Characterization

CA125(Gly 12664 - Val 12920) XP_015296314.1	Poly-his
--	----------

This protein carries a polyhistidine tag at the C-terminus

The protein has a calculated MW of 29.9 kDa. The protein migrates as 44-55 kDa under reducing (R) condition (SDS-PAGE) due to glycosylation.

Endotoxin

Less than 0.1 EU per μg by the LAL method.

Purity

>90% as determined by SDS-PAGE.

>90% as determined by SEC-MALS.

Formulation

Lyophilized from 0.22 μm filtered solution in PBS, pH7.4 with trehalose as protectant.

Contact us for customized product form or formulation.

Reconstitution

Please see Certificate of Analysis for specific instructions.

For best performance, we strongly recommend you to follow the reconstitution protocol provided in the CoA.

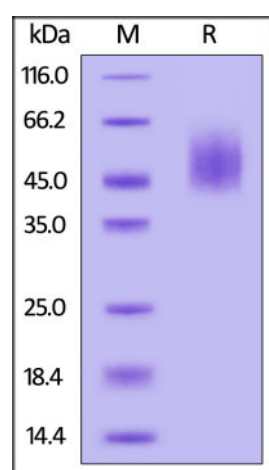
Storage

For long term storage, the product should be stored at lyophilized state at -20°C or lower.

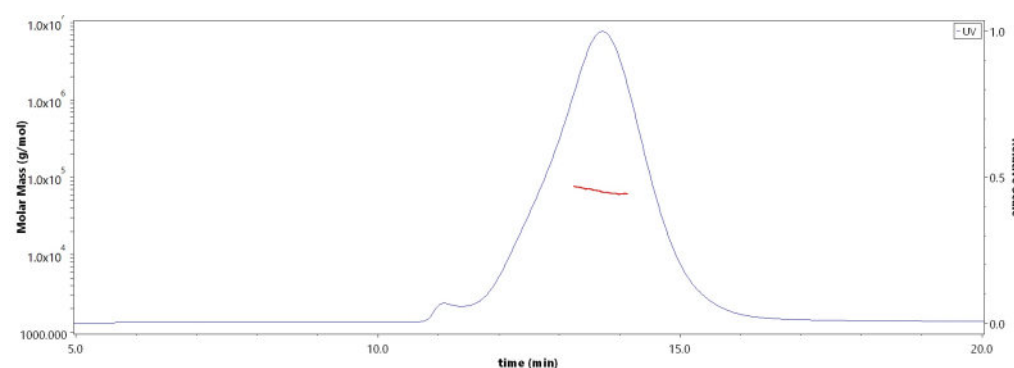
Please avoid repeated freeze-thaw cycles.

This product is stable after storage at:

- -20°C to -70°C for 12 months in lyophilized state;
- -70°C for 3 months under sterile conditions after reconstitution.

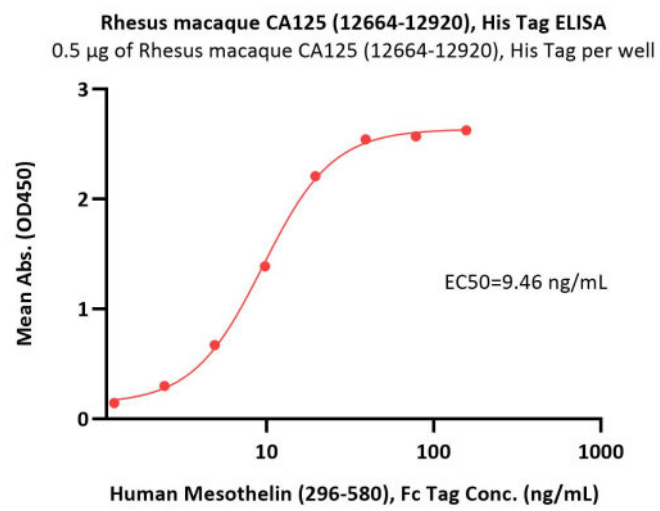
SDS-PAGE

Rhesus macaque CA125 (12664-12920), His Tag on SDS-PAGE under reducing (R) condition. The gel was stained with Coomassie Blue. The purity of the protein is greater than 90%.

Bioactivity-ELISA**SEC-MALS**

The purity of Rhesus macaque CA125 (12664-12920), His Tag (Cat. No. CA5-R52H3) is more than 90% and the molecular weight of this protein is around 55-70 kDa verified by SEC-MALS.

[Report](#)



Immobilized Rhesus macaque CA125 (12664-12920), His Tag (Cat. No. CA5-R52H3) at 5 µg/mL (100 µL/well) can bind Human Mesothelin (296-580), Fc Tag (Cat. No. MSN-H5253) with a linear range of 1-20 ng/mL (QC tested).

Background

The CA125, also known as the MUC16, is a mucin protein that may be found in type I transmembrane or secreted forms that are used to monitor the progress of epithelial ovarian cancer therapy. The CA 125 molecule is almost certainly a glycoprotein with a predominance of O-linkages. It is heterogeneous with regard to both size and charge, most likely due to continuous deglycosylation of side chains during its life-span in bodily fluids. It exists as a very large complex (perhaps as much as 4 million daltons) under natural conditions.

Clinical and Translational Updates

Please contact us via TechSupport@acrobiosystems.com if you have any question on this product.