



Synonym

CC chemokine receptor 8,CD198,ChemR1,CKRL1,CKR-L1,CKRL1,CY6,GPRCL1,GPRCY6,GPR-CY6,TER-1

Source

Human CCR8 Protein, Flag,His Tag&Twin-Strep Tag (CC8-H52D6) is expressed from human 293 cells (HEK293). It is a membrane protein, contains complete wild type 7-transmembrane domains (TMD) and extracellular domain (ECD).

Predicted N-terminus: Asp

Molecular Characterization

The protein has a calculated MW of 62.0 kDa.

Endotoxin

Less than 1.0 EU per µg by the LAL method.

Purity

>90% as determined by SDS-PAGE.

Formulation

This product is not suitable for cell based experiments due to cytotoxicity of LMNG.

LMNG and CHS are INDISPENSABLE to keep membrane protein soluble and active, under no circumstance should you remove LMNG and CHS. LMNG/CHS buffer (LG-13) is sold separately and not included in protein, and please contact us if you need the buffer.

If glycerol is not compatible to your application, remove glycerol just before immediate experiment, and NEVER store glycerol-free protein solution.

Supplied as 0.2 µm filtered solution in 50 mM HEPES, 150 mM NaCl, LMNG, CHS, pH7.5 with glycerol as protectant.

Contact us for customized product form or formulation.

Shipping

This product is supplied and shipped with dry ice, please inquire the shipping cost.

Storage

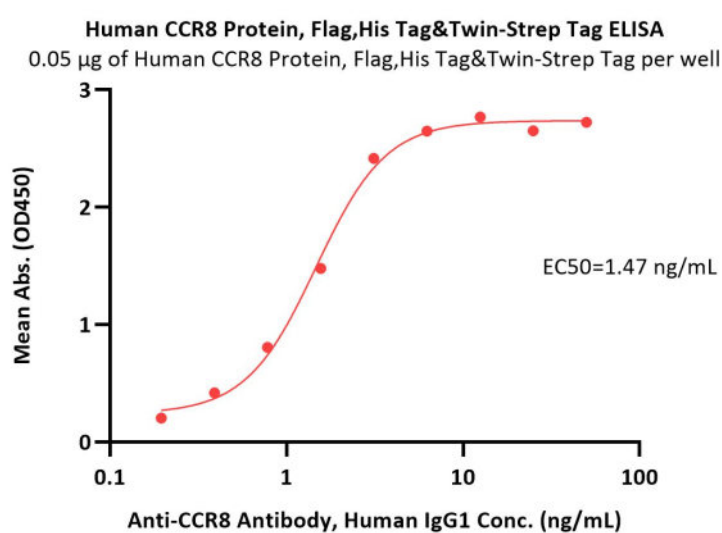
Please avoid repeated freeze-thaw cycles.

This product is stable after storage at:

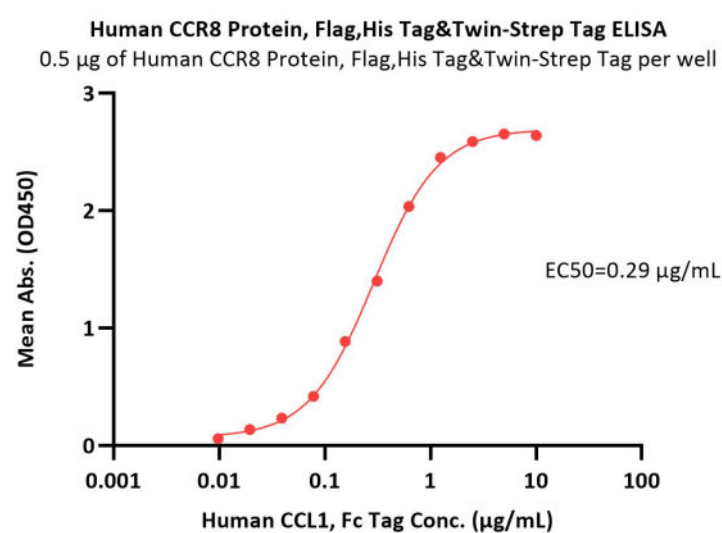
- The product MUST be stored at -70°C or lower upon receipt;
- -70°C for 3 months under sterile conditions.

*The LMNG buffer (Cat. No. [LG-13](#)) is sold separately and not included in protein, you can follow [this link](#) for product information.

Bioactivity-ELISA



Immobilized Human CCR8 Protein, Flag,His Tag&Twin-Strep Tag (Cat. No. CC8-H52D6) at 0.5 µg/mL (100 µL/well) can bind Anti-CCR8 Antibody, Human IgG1 with a linear range of 0.2-6 ng/mL (QC tested).



Immobilized Human CCR8 Protein, Flag,His Tag&Twin-Strep Tag (Cat. No. CC8-H52D6) at 5 µg/mL (100 µL/well) can bind Human CCL1, Fc Tag (Cat. No. CC1-H5254) with a linear range of 0.01-0.625 µg/mL (Routinely tested).

Discounts, Gifts,
and more!

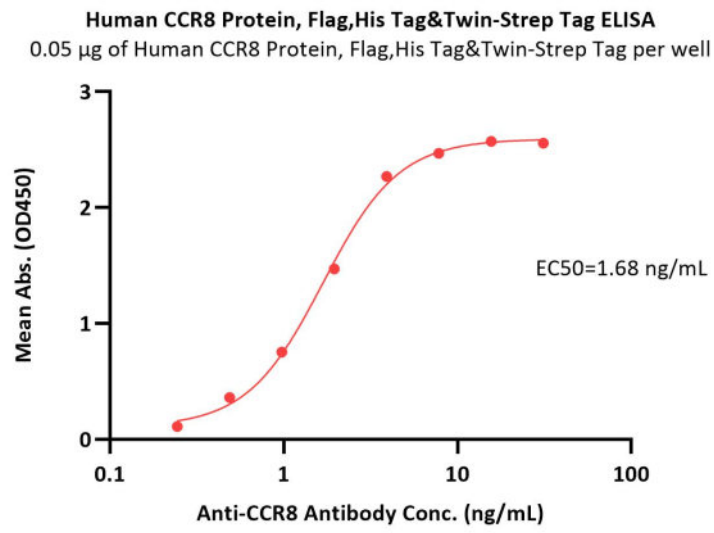


Human CCR8 Protein, Flag,His Tag&Twin-Strep Tag (Detergent)

Catalog # CC8-H52D6

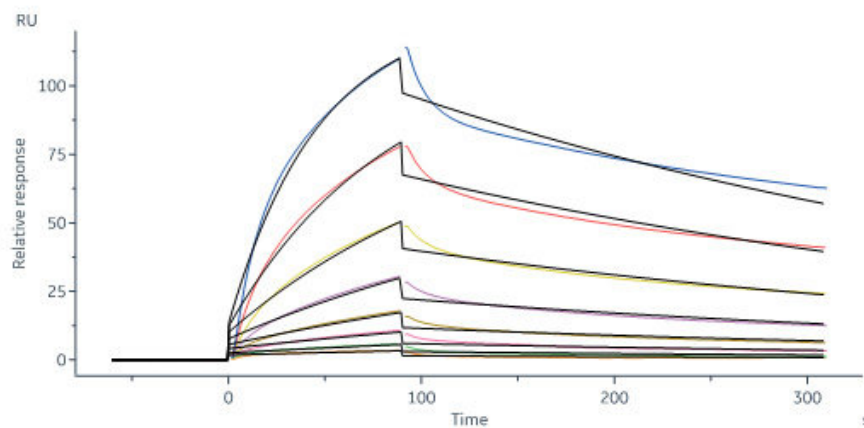


BIOSYSTEMS
Acro
Surprise Inside!



Immobilized Human CCR8 Protein, Flag,His Tag&Twin-Strep Tag (Cat. No. CC8-H52D6) at 0.5 µg/mL (100 µL/well) can bind Anti-CCR8 Antibody with a linear range of 0.2-4 ng/mL (Routinely tested).

Bioactivity-SPR



Anti-CCR8 captured on Protein A Chip can bind Human CCR8 Protein, Flag,His Tag&Twin-Strep Tag (Cat. No. CC8-H52D6) with an affinity constant of 63.8 nM as determined in a SPR assay (in presence of DDM and CHS) (Biacore 8K) (Routinely tested).

Background

This entry represents CC chemokine receptor 8 (CCR8), which it is expressed predominantly in lymphoid tissues and has also been found in glomerular podocytes and human umbilical vein endothelial cells (HUVECs). CCR8 is associated with Th2 lymphocytes, which are critical for allergy, and has a role in lymphocyte activation, migration, proliferation and differentiation and in allergic diseases. CCR8 binds to CCL1 (also known as I-309) and to CCL16 (also known as liver expressed chemokine). It also exhibits a high affinity for three chemokines of viral origin: vMIP-I, vMIP-II and vMCC-I.

Clinical and Translational Updates

Discounts, Gifts,
and more!



➤ www.acrobiosystems.com

11/6/2024