

Synonym

MS4A1,CD20,MS4A-1

Source

Canine CD20 Full Length Protein, His Tag(CD0-C52H9) is expressed from human 293 cells (HEK293). It contains AA Met 1 - Pro 297 (Accession # [Q3C2E2-1](#)).

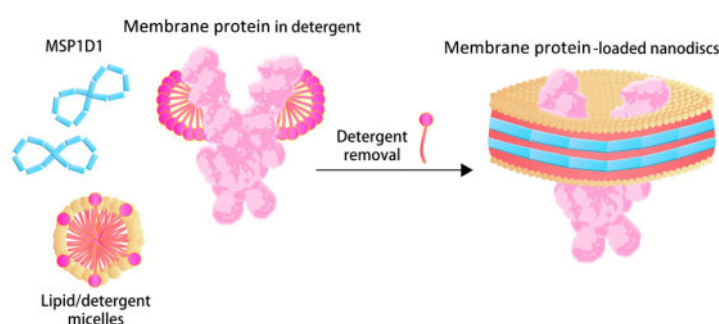
Predicted N-terminus: Met 1

Molecular Characterization

CD20(Met 1 - Pro 297) Q3C2E2-1	Poly-his
-----------------------------------	----------

This protein carries a polyhistidine tag at the C-terminus. The protein has a calculated MW of 35.2 kDa. The protein migrates as 25 kDa and 40 kDa under reducing (R) condition (SDS-PAGE) due to glycosylation. The membrane scaffold protein (MSP1D1) has calculated MW of 24.7 kDa, and it migrates as 25 kDa under reducing (R) condition (SDS-PAGE).

Nanodiscs are a new class of model membranes that are being used to solubilize and study a range of integral membrane proteins and membrane-associated proteins. The Nanodisc bilayer is bounded by a membrane scaffold protein (MSP1D1) coat that confers enhanced stability and a narrow particle size distribution.



The nanodisc assembles from a mixture of full length membrane protein in detergent, phospholipid micelles and membrane scaffold protein(MSP1D1) upon removal of the detergent.

Endotoxin

Less than 1.0 EU per µg by the LAL method.

Purity

>80% as determined by SDS-PAGE.

Formulation

Supplied as 0.2 µm filtered solution in 20 mM HEPES, 150 mM NaCl, pH7.5 with trehalose as protectant.

Contact us for customized product form or formulation.

Shipping

This product is supplied and shipped as sterile liquid solution with dry ice, please inquire the shipping cost.

Storage

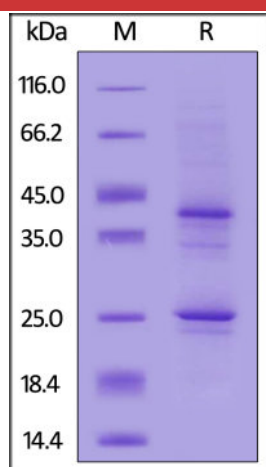
Please avoid repeated freeze-thaw cycles.

This product is stable after storage at:

- The product MUST be stored at -70°C or lower upon receipt;
- -70°C for 3 months under sterile conditions.

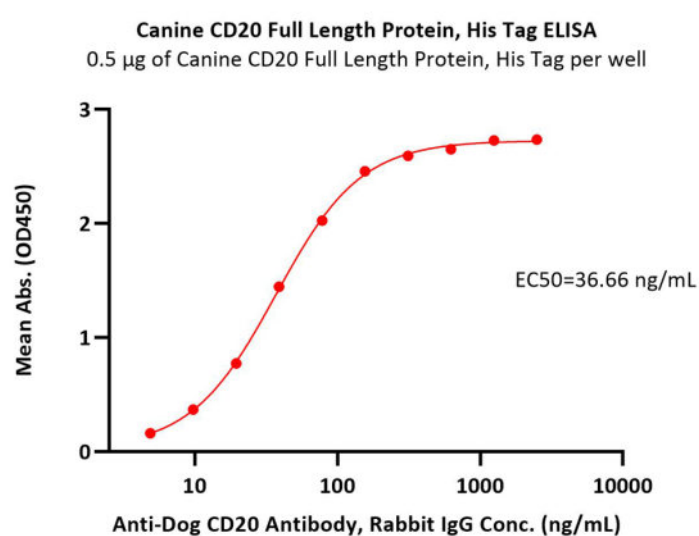
*The isotype control of empty/mock nanodisc (Cat. No. [APO-H51H3](#)) is sold separately and not included in protein, you can follow [this link](#) for product information.

SDS-PAGE



Canine CD20 Full Length Protein, His Tag on SDS-PAGE under reducing (R) condition. The gel was stained with Coomassie Blue. The purity of the protein is greater than 80%.

Bioactivity-ELISA



Immobilized Canine CD20 Full Length Protein, His Tag (Cat. No. CD0-C52H9) at 5 µg/mL (100 µL/well) can bind Anti-Dog CD20 Antibody, Rabbit IgG with a linear range of 5-78 (QC tested).

Background

This gene encodes a member of the membrane-spanning 4A gene family. Members of this nascent protein family are characterized by common structural features and similar intron/exon splice boundaries and display unique expression patterns among hematopoietic cells and nonlymphoid tissues. This gene encodes a B-lymphocyte surface molecule which plays a role in the development and differentiation of B-cells into plasma cells. This protein can be used for screening and validation of dog CD20 antibody.

Clinical and Translational Updates

Please contact us via TechSupport@acrobiosystems.com if you have any question on this product.