

Synonym

CD300LG,CLM9,TREM4,CD300g,Nepmucin

Source

Human CD300LG, His Tag (CDG-H5223) is expressed from human 293 cells (HEK293). It contains AA Leu 19 - Arg 247 (Accession # [AAH25395](#)).

Predicted N-terminus: Leu 19

Molecular Characterization

CD300LG(Leu 19 - Arg 247) AAH25395	Poly-his
---------------------------------------	----------

This protein carries a polyhistidine tag at the C-terminus.

The protein has a calculated MW of 25.6 kDa. The protein migrates as 33-68 kDa under reducing (R) condition (SDS-PAGE) due to different glycosylation.

Endotoxin

Less than 1.0 EU per µg by the LAL method.

Purity

>95% as determined by SDS-PAGE.

Formulation

Lyophilized from 0.22 µm filtered solution in PBS, pH7.4. Normally trehalose is added as protectant before lyophilization.

Contact us for customized product form or formulation.

Reconstitution

Please see Certificate of Analysis for specific instructions.

For best performance, we strongly recommend you to follow the reconstitution protocol provided in the CoA.

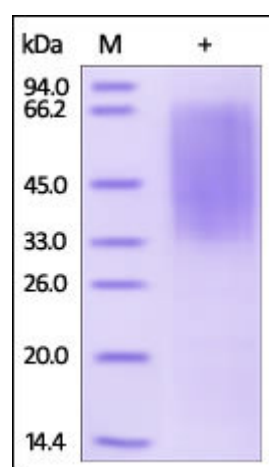
Storage

For long term storage, the product should be stored at lyophilized state at -20°C or lower.

Please avoid repeated freeze-thaw cycles.

This product is stable after storage at:

- -20°C to -70°C for 12 months in lyophilized state;
- -70°C for 3 months under sterile conditions after reconstitution.

SDS-PAGE

Human CD300LG, His Tag on SDS-PAGE under reducing (R) condition. The gel was stained overnight with Coomassie Blue. The purity of the protein is greater than 95%.

Background

CMRF35-like molecule 9 (CLM-9) is also known as CD300 antigen-like family member G (CD300LG or CD300g), Nepmucin, Triggering receptor expressed on myeloid cells 4 (TREM-4), which belongs to the CD300 family. CD300LG contains one Ig-like V-type (immunoglobulin-like) domain. CD300LG is highly expressed in heart, skeletal muscle and placenta. CD300LG is a receptor which may mediate L-selectin-dependent lymphocyte rollings. CD300LG binds SELL in a calcium dependent manner and also binds lymphocyte.

Clinical and Translational Updates

Please contact us via TechSupport@acrobiosystems.com if you have any question on this product.