



## Synonym

DLEC,CLEC4C,BDCA-2,CD303,CLECSF11,CLECSF7, HECL

## Source

Cynomolgus CLEC4C, His Tag(CLC-C52H4) is expressed from human 293 cells (HEK293). It contains AA Tyr 48 - Ile 212 (Accession # [A0A2K5UWP4-1](#)).

Predicted N-terminus: His

## Molecular Characterization

Poly-his CLEC4C(Tyr 48 - Ile 212)  
A0A2K5UWP4-1

This protein carries a polyhistidine tag at the N-terminus.

The protein has a calculated MW of 26.1 kDa. The protein migrates as 30-35 kDa when calibrated against [Star Ribbon Pre-stained Protein Marker](#) under reducing (R) condition (SDS-PAGE) due to glycosylation.

## Endotoxin

Less than 1.0 EU per µg by the LAL method.

## Purity

>95% as determined by SDS-PAGE.

>90% as determined by SEC-MALS.

## Formulation

Lyophilized from 0.22 µm filtered solution in PBS, pH7.4 with trehalose as protectant.

Contact us for customized product form or formulation.

## Reconstitution

Please see Certificate of Analysis for specific instructions.

*For best performance, we strongly recommend you to follow the reconstitution protocol provided in the CoA.*

## Storage

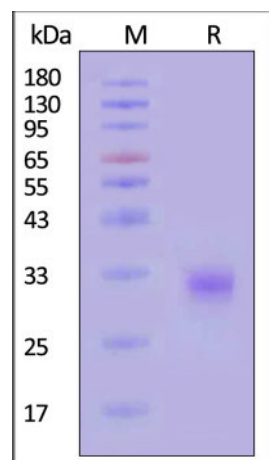
For long term storage, the product should be stored at lyophilized state at -20°C or lower.

*Please avoid repeated freeze-thaw cycles.*

This product is stable after storage at:

- -20°C to -70°C for 12 months in lyophilized state;
- -70°C for 3 months under sterile conditions after reconstitution.

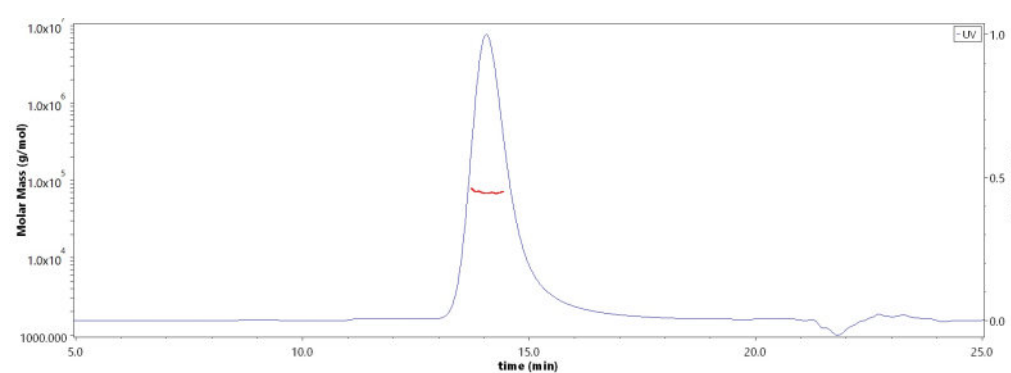
## SDS-PAGE



Cynomolgus CLEC4C, His Tag on SDS-PAGE under reducing (R) condition. The gel was stained with Coomassie Blue. The purity of the protein is greater than 95% (With [Star Ribbon Pre-stained Protein Marker](#)).

## Bioactivity-ELISA

## SEC-MALS

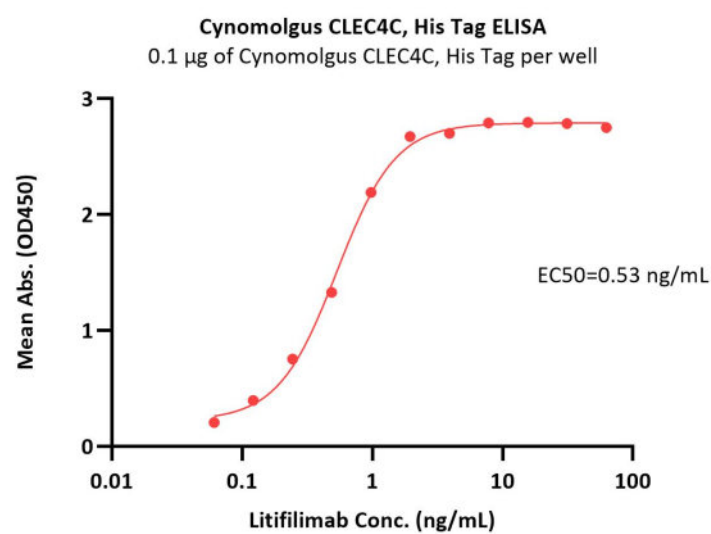


The purity of Cynomolgus CLEC4C, His Tag (Cat. No. CLC-C52H4) is more than 90% and the molecular weight of this protein is around 59-80 kDa verified by SEC-MALS.

[Report](#)

Discounts, Gifts,  
and more!





Immobilized Cynomolgus CLEC4C, His Tag (Cat. No. CLC-C52H4) at 1 µg/mL (100 µL/well) can bind Litifilimab with a linear range of 0.06-2 ng/mL (QC tested).

## Background

CLEC4C (C-type lectin domain family 4 member C), also known as BDCA2, CLECSF11, CLECSF7, DLEC and CD303. Lectin-type cell surface receptor which may play a role in antigen capturing by dendritic cell. Specifically recognizes non-sialylated galactose-terminated biantennary glycans containing the trisaccharide epitope Gal(beta1-3/4)GlcNAc(beta1-2)Man. Binds to serum IgG. Efficiently targets ligand into antigen-processing and peptide-loading compartments for presentation to T-cells. May mediate potent inhibition of induction of IFN-alpha/beta expression in plasmacytoid dendritic cells. May act as a signaling receptor that activates protein-tyrosine kinases and mobilizes intracellular calcium.

## Clinical and Translational Updates

Discounts, Gifts,  
and more!

