



Synonym

DLEC,CLEC4C,BDCA-2,CD303,CLECSF11,CLECSF7, HECL

Source

Human CLEC4C, His Tag(CLC-H5245) is expressed from human 293 cells (HEK293). It contains AA Asn 45 - Ile 213 (Accession # [Q8WTT0-1](#)).

Predicted N-terminus: His

Molecular Characterization

Poly-his CLEC4C(Asn 45 - Ile 213)
Q8WTT0-1

This protein carries a polyhistidine tag at the N-terminus.

The protein has a calculated MW of 26.6 kDa. The protein migrates as 33-40 kDa when calibrated against [Star Ribbon Pre-stained Protein Marker](#) under reducing (R) condition (SDS-PAGE) due to glycosylation.

Endotoxin

Less than 1.0 EU per µg by the LAL method.

Purity

>90% as determined by SDS-PAGE.

Formulation

Lyophilized from 0.22 µm filtered solution in PBS, pH7.4 with trehalose as protectant.

Contact us for customized product form or formulation.

Reconstitution

Please see Certificate of Analysis for specific instructions.

For best performance, we strongly recommend you to follow the reconstitution protocol provided in the CoA.

Storage

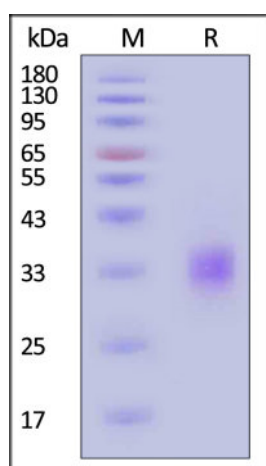
For long term storage, the product should be stored at lyophilized state at -20°C or lower.

Please avoid repeated freeze-thaw cycles.

This product is stable after storage at:

- -20°C to -70°C for 12 months in lyophilized state;
- -70°C for 3 months under sterile conditions after reconstitution.

SDS-PAGE

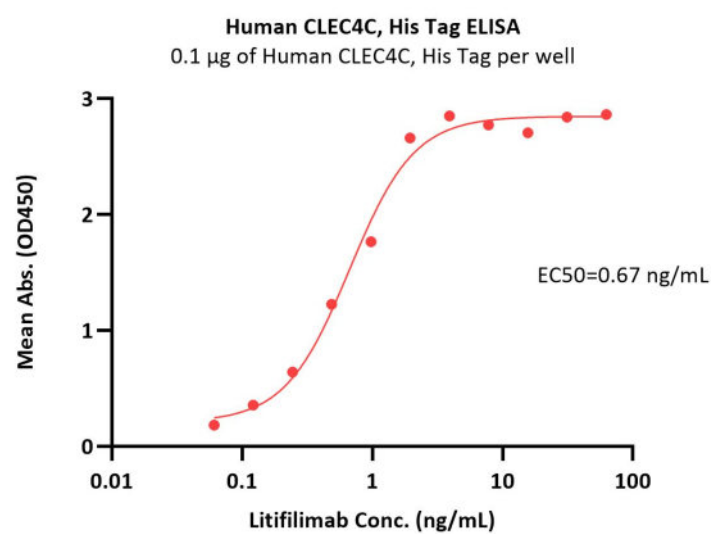


Human CLEC4C, His Tag on SDS-PAGE under reducing (R) condition. The gel was stained with Coomassie Blue. The purity of the protein is greater than 90% (With [Star Ribbon Pre-stained Protein Marker](#)).

Bioactivity-ELISA

Discounts, Gifts,
and more!





Immobilized Human CLEC4C, His Tag (Cat. No. CLC-H5245) at 1 µg/mL (100 µL/well) can bind Litifilimab with a linear range of 0.06-2 ng/mL (QC tested).

Background

CLEC4C (C-type lectin domain family 4 member C), also known as BDCA2, CLECSF11, CLECSF7, DLEC and CD303. Lectin-type cell surface receptor which may play a role in antigen capturing by dendritic cell. Specifically recognizes non-sialylated galactose-terminated biantennary glycans containing the trisaccharide epitope Gal(beta1-3/4)GlcNAc(beta1-2)Man. Binds to serum IgG. Efficiently targets ligand into antigen-processing and peptide-loading compartments for presentation to T-cells. May mediate potent inhibition of induction of IFN-alpha/beta expression in plasmacytoid dendritic cells. May act as a signaling receptor that activates protein-tyrosine kinases and mobilizes intracellular calcium.

Clinical and Translational Updates

Discounts, Gifts,
and more!

