



Source

Monoclonal Anti-DENV 2(strain Thailand/16681/1984)-NS1 Antibody, Human IgG1 (7E12) is a chimeric monoclonal antibody recombinantly expressed from HEK293, which combines the variable region of a mouse monoclonal antibody with Human constant domain.

Clone

7E12

Isotype

Human IgG1 | Human Kappa

Conjugate

Unconjugated

Antibody Type

Recombinant Monoclonal

Reactivity

Virus

Specificity

This product is a specific antibody specifically reacts with NS1.

Application

Application	Recommended Usage
Western Blot	0.1-10 ug/mL
ELISA	4-62.5 ng/mL

Purity

>95% as determined by SDS-PAGE.

Purification

Protein A purified/ Protein G purified

Formulation

Lyophilized from 0.22 µm filtered solution in PBS, pH7.4 with trehalose as protectant.

Contact us for customized product form or formulation.

Reconstitution

Please see Certificate of Analysis for specific instructions.

For best performance, we strongly recommend you to follow the reconstitution protocol provided in the CoA.

Storage

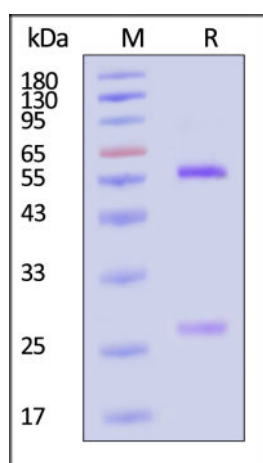
For long term storage, the product should be stored at lyophilized state at -20°C or lower.

Please avoid repeated freeze-thaw cycles.

This product is stable after storage at:

- -20°C to -70°C for 12 months in lyophilized state;
- -70°C for 3 months under sterile conditions after reconstitution.

SDS-PAGE



Monoclonal Anti-DENV 2(strain Thailand/16681/1984)-NS1 Antibody, Human IgG1 (7E12) on SDS-PAGE under reducing (R) condition. The gel was

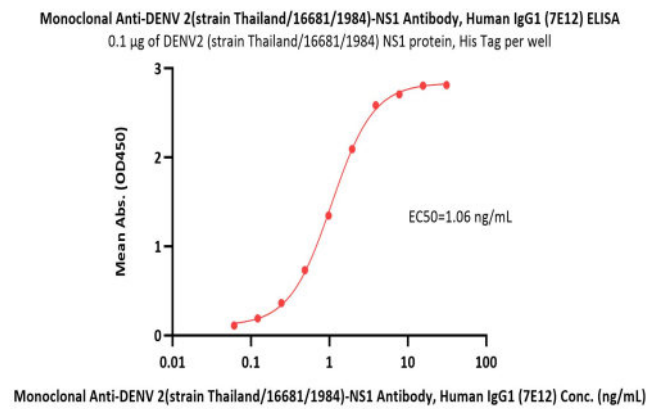
Discounts, Gifts,
and more!





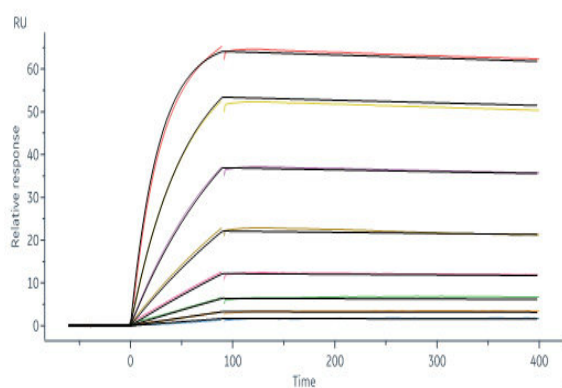
stained with Coomassie Blue. The purity of the protein is greater than 95% (With [Star Ribbon Pre-stained Protein Marker](#)).

Bioactivity-ELISA



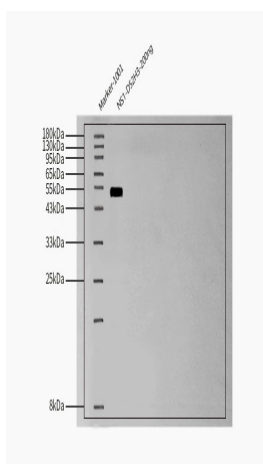
Immobilized DENV2 (strain Thailand/16681/1984) NS1 protein, His Tag (Cat. No. NS1-D52H3) at 1 µg/mL (100 µL/well) can bind Monoclonal Anti-DENV 2(strain Thailand/16681/1984)-NS1 Antibody, Human IgG1 (7E12) (Cat. No. DE1-M756) with a linear range of 0.06-2 ng/mL (QC tested).

Bioactivity-SPR



Monoclonal Anti-DENV 2(strain Thailand/16681/1984)-NS1 Antibody, Human IgG1 (7E12) (Cat. No. DE1-M756) captured on Protein A Chip can bind DENV2 (strain Thailand/16681/1984) NS1 protein, His Tag (Cat. No. NS1-D52H3) with an affinity constant of 0.167 nM as determined in a SPR assay (Biacore 8K) (Routinely tested).

Western Blot



Detection of Anti-DENV 2(strain Thailand/16681/1984)-NS1-7E12,Human,Human IgG1 | Human Kappa,HEK by Western Blot. Anti-DENV 2(strain Thailand/16681/1984)-NS1-7E12,Human,Human IgG1 | Human Kappa,HEK at 1/5000 dilution + DENV2 (strain Thailand/16681/1984) NS1 protein, His Tag (MALS verified) at 200ng. Secondary Antibody: (HFC)-HRP Goat Anti-Human IgG,Fcγ fragment specific (min X Bov,Hrs,Ms Sr Prot) at 1/2000 dilution. Predicted band size: 45~55 kDa 12% Bis-Tris Protein Gel.

Discounts, Gifts, and more!





Background

Dengue is a mosquito-borne viral disease widely spread all over the world transmitted by 4 serotypes of dengue virus (DENV). The symptoms range from mild dengue fever to dengue hemorrhagic fever (DHF) and dengue shock syndrome (DSS) with high mortality. Currently, most of the studies on DENV vaccines emphasize on its envelope protein (i.e., Sanofi's tetravalent dengue vaccine Dengvaxia). However, the fact pointing out that the vaccines with Envelope protein may could have negative effect on people never infected by DENV which makes the non-structural protein NS1 become another great target for vaccine research with its ability to avoid Antibody Dependent Enhancement.

Clinical and Translational Updates

**Discounts, Gifts,
and more!**

