



## Synonym

Delta3,delta-like 3 (Drosophila),delta-like protein 3,DLL3,Pudgy,SCDO1,SCDO1delta3

## Source

Cynomolgus DLL3, His Tag(DL3-C52H3) is expressed from human 293 cells (HEK293). It contains AA Ala 27 - Arg 490 (Accession # [XP\\_005589253.1](#)).

## Molecular Characterization

DLL3(Ala 27 - Arg 490)  
XP\_005589253.1 Poly-his

This protein carries a polyhistidine tag at the C-terminus.

The protein has a calculated MW of 50.4 kDa. The protein migrates as 65-80 kDa under reducing (R) condition (SDS-PAGE) due to glycosylation.

## Endotoxin

Less than 1.0 EU per µg by the LAL method.

## Purity

>90% as determined by SDS-PAGE.

## Formulation

Lyophilized from 0.22 µm filtered solution in PBS, pH7.4 with trehalose as protectant.

Contact us for customized product form or formulation.

## Reconstitution

Please see Certificate of Analysis for specific instructions.

*For best performance, we strongly recommend you to follow the reconstitution protocol provided in the CoA.*

## Storage

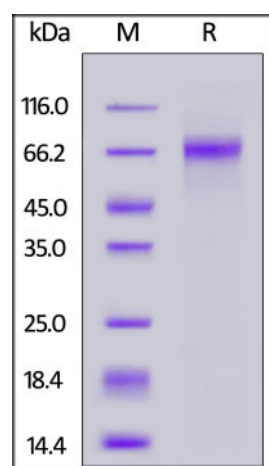
For long term storage, the product should be stored at lyophilized state at -20°C or lower.

*Please avoid repeated freeze-thaw cycles.*

This product is stable after storage at:

- -20°C to -70°C for 12 months in lyophilized state;
- -70°C for 3 months under sterile conditions after reconstitution.

## SDS-PAGE

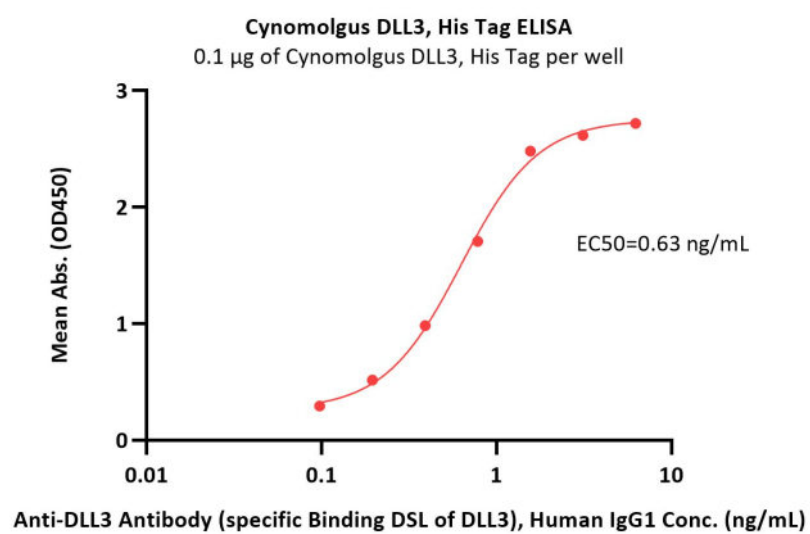


Cynomolgus DLL3, His Tag on SDS-PAGE under reducing (R) condition. The gel was stained with Coomassie Blue. The purity of the protein is greater than 90%.

## Bioactivity-ELISA

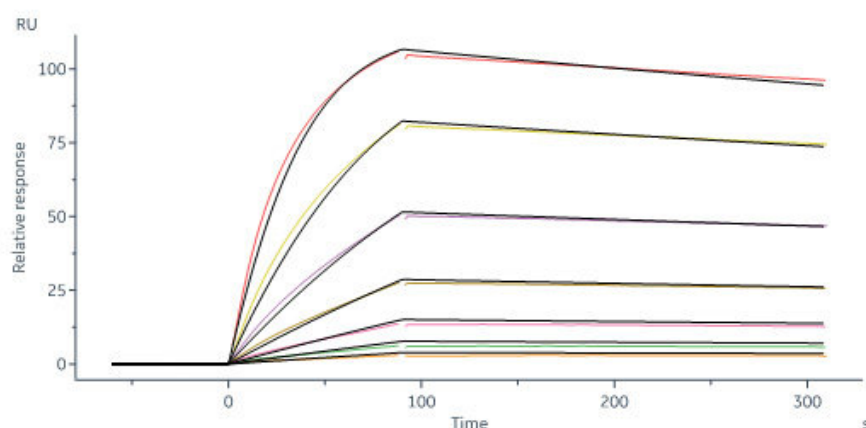
Discounts, Gifts,  
and more!





Immobilized Cynomolgus DLL3, His Tag (Cat. No. DL3-C52H3) at 1 µg/mL (100 µL/well) can bind Anti-DLL3 Antibody (specific Binding DSL of DLL3), Human IgG1 with a linear range of 0.1-0.8 ng/mL (QC tested).

## Bioactivity-SPR



Bispecific T-cell Engager captured on Protein A Chip can bind Cynomolgus DLL3, His Tag (Cat. No. DL3-C52H3) with an affinity constant of 0.792 nM as determined in a SPR assay (Biacore 8K) (Routinely tested).

## Background

Delta-like protein 3 (DLL3) is a transmembrane protein that belongs to the Delta/Serrate/Lag-2 (DSL) family of Notch ligands. May be required to divert neurons along a specific differentiation pathway. Plays a role in the formation of somite boundaries during segmentation of the paraxial mesoderm. DLL3 protein is expressed on the surface of tumor cells but not in normal adult tissues.

## Clinical and Translational Updates

Discounts, Gifts,  
and more!

