



## Synonym

Delta3,delta-like 3 (Drosophila),delta-like protein 3,DLL3,Pudgy,SCDO1,SCDO1delta3

## Source

Human DLL3, His Tag(DL3-H52H4) is expressed from human 293 cells (HEK293). It contains AA Ala 27 - Leu 492 (Accession # [Q9NYJ7-1](#)). Predicted N-terminus: Ala 27

## Molecular Characterization

DLL3(Ala 27 - Leu 492)  
Q9NYJ7-1 Poly-his

This protein carries a polyhistidine tag at the C-terminus.

The protein has a calculated MW of 50.4 kDa. The protein migrates as 50-55 kDa under reducing (R) condition (SDS-PAGE) due to glycosylation.

## Endotoxin

Less than 1.0 EU per µg by the LAL method.

## Purity

>95% as determined by SDS-PAGE.

>95% as determined by SEC-MALS.

## Formulation

Lyophilized from 0.22 µm filtered solution in PBS with Arginine, pH7.4 with trehalose as protectant.

Contact us for customized product form or formulation.

## Reconstitution

Please see Certificate of Analysis for specific instructions.

*For best performance, we strongly recommend you to follow the reconstitution protocol provided in the CoA.*

## Storage

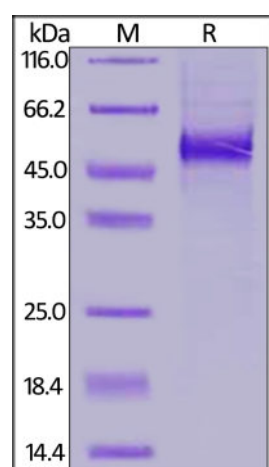
For long term storage, the product should be stored at lyophilized state at -20°C or lower.

*Please avoid repeated freeze-thaw cycles.*

This product is stable after storage at:

- -20°C to -70°C for 12 months in lyophilized state;
- -70°C for 3 months under sterile conditions after reconstitution.

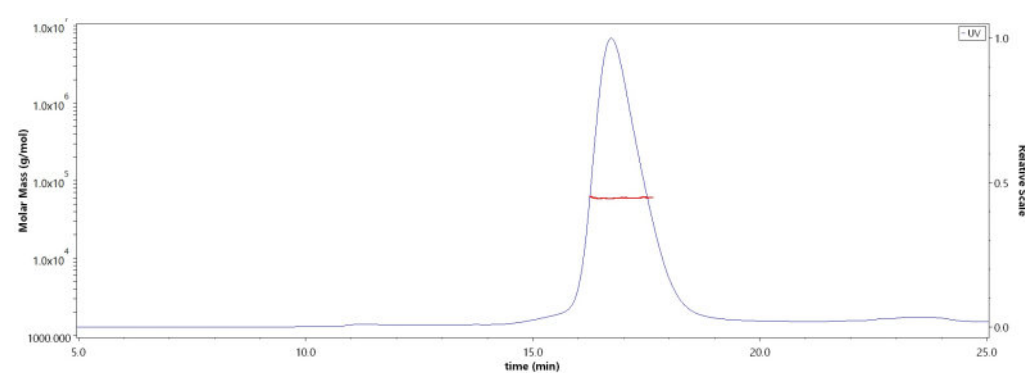
## SDS-PAGE



Human DLL3, His Tag on SDS-PAGE under reducing (R) condition. The gel was stained with Coomassie Blue. The purity of the protein is greater than 95%.

## Bioactivity-ELISA

## SEC-MALS



The purity of Human DLL3, His Tag (Cat. No. DL3-H52H4) is more than 95% and the molecular weight of this protein is around 55-75 kDa verified by SEC-MALS.

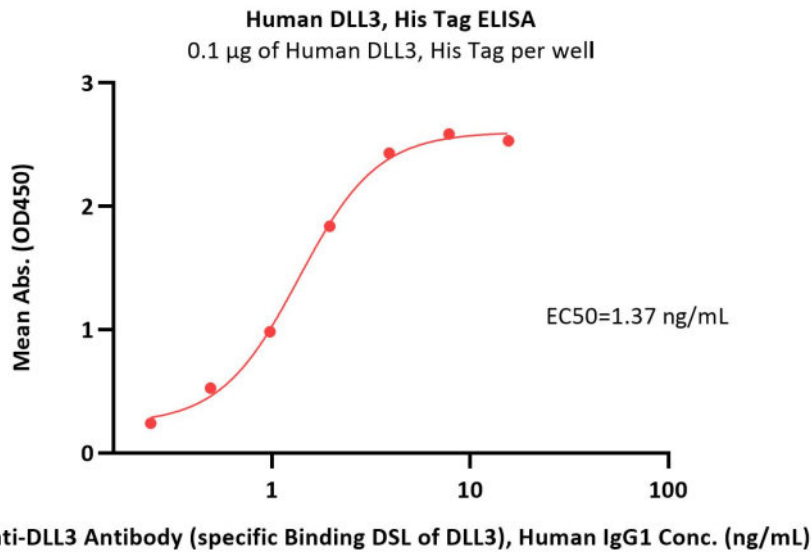
[Report](#)

Discounts, Gifts,  
and more!

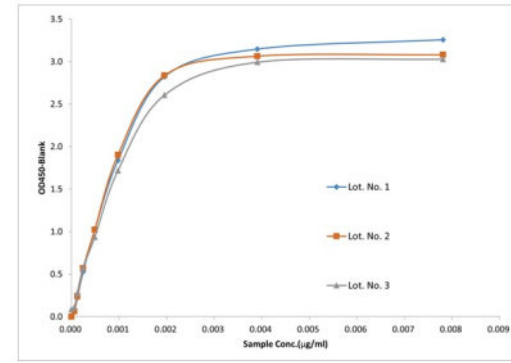


# Human DLL3 Protein, His Tag (MALS verified)

Catalog # DL3-H52H4

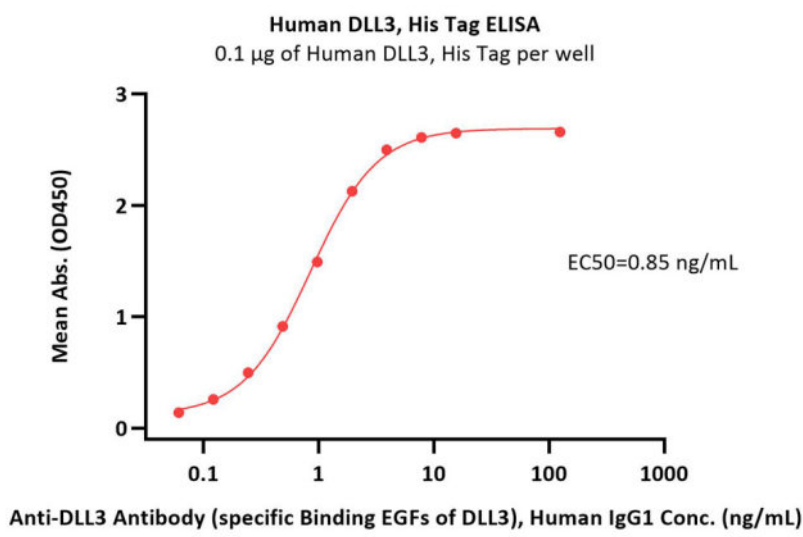


## Batch consistency



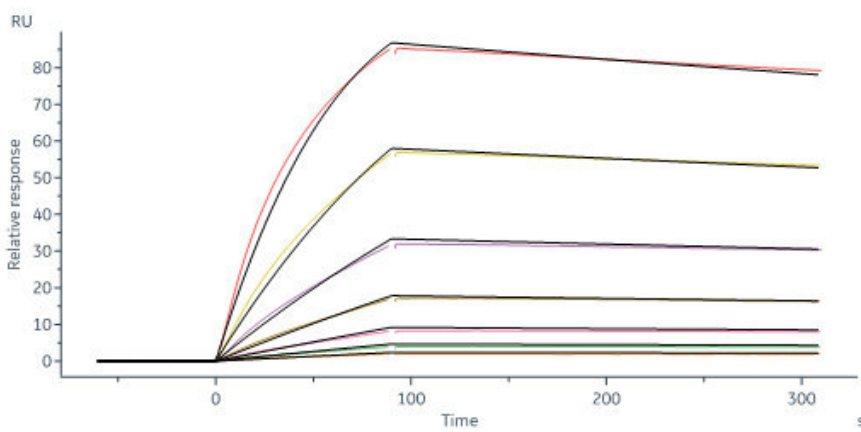
| Lot. No.   | EC50(µg/mL) |
|------------|-------------|
| Lot. No. 1 | 0.0008      |
| Lot. No. 2 | 0.0007      |
| Lot. No. 3 | 0.0009      |

Immobilized Human DLL3, His Tag (Cat. No. DL3-H52H4) at 1 µg/mL (100 µL/well) can bind Anti-DLL3 Antibody (specific Binding DSL of DLL3), Human IgG1 with a linear range of 0.2-2 ng/mL (QC tested).



Immobilized Human DLL3, His Tag (Cat. No. DL3-H52H4) at 1 µg/mL (100 µL/well) can bind Anti-DLL3 Antibody (specific Binding EGFs of DLL3), Human IgG1 with a linear range of 0.01-2 ng/mL (Routinely tested).

## Bioactivity-SPR



Bispecific T-cell Engager captured on Protein A Chip can bind Human DLL3, His Tag (Cat. No. DL3-H52H4) with an affinity constant of 1.14 nM as determined in a SPR assay (Biacore 8K) (Routinely tested).

Discounts, Gifts,  
and more!



# Human DLL3 Protein, His Tag (MALS verified)

Catalog # DL3-H52H4



## Background

Delta-like protein 3 (DLL3) is a transmembrane protein that belongs to the Delta/Serrate/Lag-2 (DSL) family of Notch ligands. May be required to divert neurons along a specific differentiation pathway. Plays a role in the formation of somite boundaries during segmentation of the paraxial mesoderm. DLL3 protein is expressed on the surface of tumor cells but not in normal adult tissues.

## Clinical and Translational Updates

Discounts, Gifts,  
and more!



[www.acrobiosystems.com](http://www.acrobiosystems.com)