



**Source**

PE-Labeled Monoclonal Mouse IgG1 Antibody Isotype Control is produced via site-specific conjugation of PE to Monoclonal Mouse IgG1 Antibody Isotype Control under optimal conditions with a proprietary technology.

**Application**

Flow Cytometry. Please note that this product is NOT compatible to streptavidin detection system.

**Species**

Mouse

**Isotype**

Mouse IgG1/kappa

**Specificity**

Specifically reacts with DNP (Dinitrophenyl) and DNP conjugated proteins, which is normally not present in Humans or animals. Therefore, DNP-PM1 does not react with any antigen of Human or animal cells.

**Immunogen**

DNP (Dinitrophenyl).

**Conjugate**

PE

Excitation Wavelength: 488 nm / 561 nm

Emission Wavelength: 575 nm

**Recommended Dilution**

1:50

**Formulation**

Lyophilized from 0.22 µm filtered solution in PBS, 0.5% BSA, pH7.4 with trehalose as protectant.

Contact us for customized product form or formulation.

**Reconstitution**

Please see Certificate of Analysis for specific instructions.

*For best performance, we strongly recommend you to follow the reconstitution protocol provided in the CoA.*

**Storage**

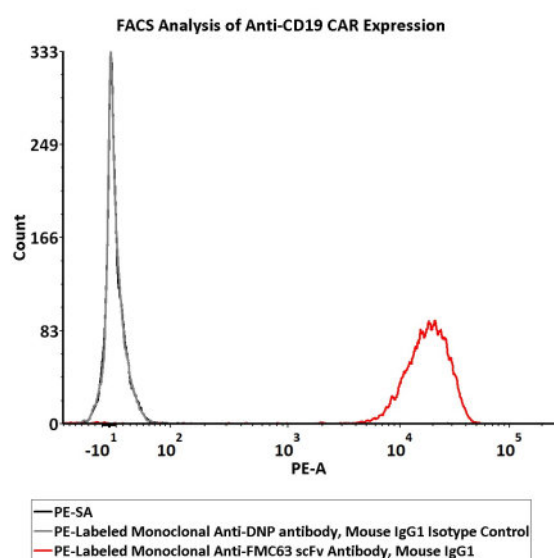
For long term storage, the product should be stored at lyophilized state at -20°C or lower.

*Please protect from light and avoid repeated freeze-thaw cycles.*

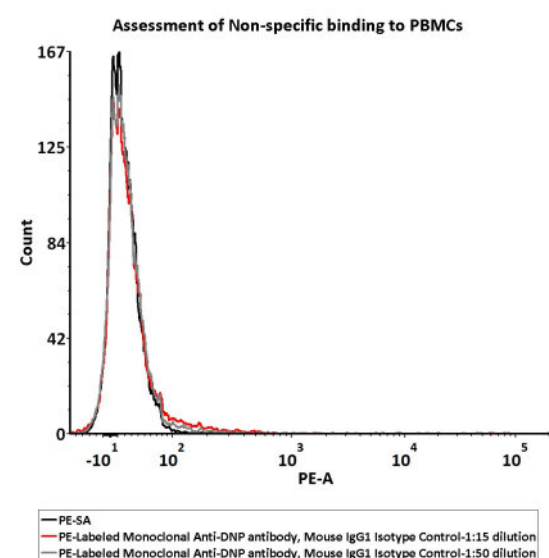
This product is stable after storage at:

- -20°C to -70°C for 24 months in lyophilized state;
- -70°C for 12 months under sterile conditions after reconstitution.

**Bioactivity-FACS**



5e5 of Anti-CD19 CAR-293 cells were stained with 100 µL of 1:50 dilution (2 µL stock solution in 100 µL FACS buffer) of PE-Labeled Monoclonal Mouse IgG1 Antibody Isotype Control (Cat. No. DNP-PM1) and positive control PE-Labeled Monoclonal Anti-FMC63 scFv Antibody, Mouse IgG1 (Cat. No. FM3-



5e5 of PBMCs were stained with a series of concentrations of PE-Labeled Monoclonal Mouse IgG1 Antibody Isotype Control (Cat. No. DNP-PM1), and PE signal was used to evaluate the binding activity (QC tested).

Discounts, Gifts,  
and more!





HPY53) respectively, and PE signal was used to evaluate the binding activity (QC tested).

## Background

A hapten is a small molecule that can elicit an immune response only when conjugated with a large carrier such as a protein. Typical haptens include drugs, urushiol, quinone, steroids, etc. Peptides and non-protein antigens usually need conjugating to a carrier protein (such as BSA (bovine serum albumin) or KLH (keyhole limpet hemocyanin) to become good immunogens). Additionally, haptens should be administered with an adjuvant to ensure a high quality immune response. It is important that the hapten design (preserving greatly the chemical structure and spatial conformation of target compound), selection of the appropriate carrier protein and the conjugation method are key conditions for the desired specificity anti-hapten antibodies. We design anti-hapten antibodies based on the HaptenDB information.

## Clinical and Translational Updates

Discounts, Gifts,  
and more!

