



## Synonym

EGFR,ERBB,ERBB1,HER1,PIG61,mENA

## Source

Rhesus macaque EGF R, His Tag(EGR-C52H1) is expressed from human 293 cells (HEK293). It contains AA Leu 25 - Ser 645 (Accession # [P55245](#)).

Predicted N-terminus: Leu 25

## Molecular Characterization

EGF R(Leu 25 - Ser 645)  
P55245 Poly-his

This protein carries a polyhistidine tag at the C-terminus.

The protein has a calculated MW of 70.5 kDa. The protein migrates as 80-100 kDa under reducing (R) condition (SDS-PAGE) due to glycosylation.

## Endotoxin

Less than 1.0 EU per µg by the LAL method.

## Purity

>95% as determined by SDS-PAGE.

>90% as determined by SEC-MALS.

## Formulation

Lyophilized from 0.22 µm filtered solution in PBS, pH7.4 with trehalose as protectant.

Contact us for customized product form or formulation.

## Reconstitution

Please see Certificate of Analysis for specific instructions.

*For best performance, we strongly recommend you to follow the reconstitution protocol provided in the CoA.*

## Storage

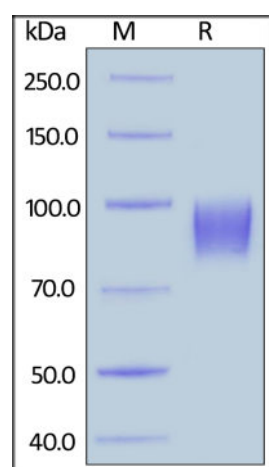
For long term storage, the product should be stored at lyophilized state at -20°C or lower.

*Please avoid repeated freeze-thaw cycles.*

This product is stable after storage at:

- -20°C to -70°C for 12 months in lyophilized state;
- -70°C for 3 months under sterile conditions after reconstitution.

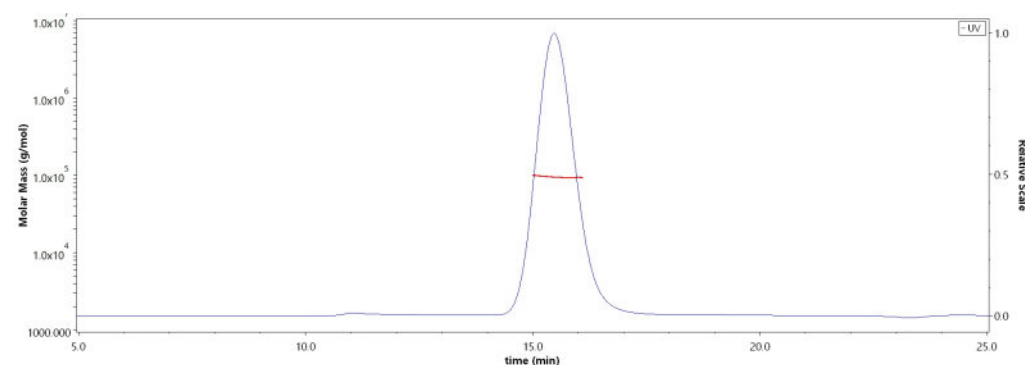
## SDS-PAGE



Rhesus macaque EGF R, His Tag on SDS-PAGE under reducing (R) condition. The gel was stained with Coomassie Blue. The purity of the protein is greater than 95%.

## Bioactivity-ELISA

## SEC-MALS

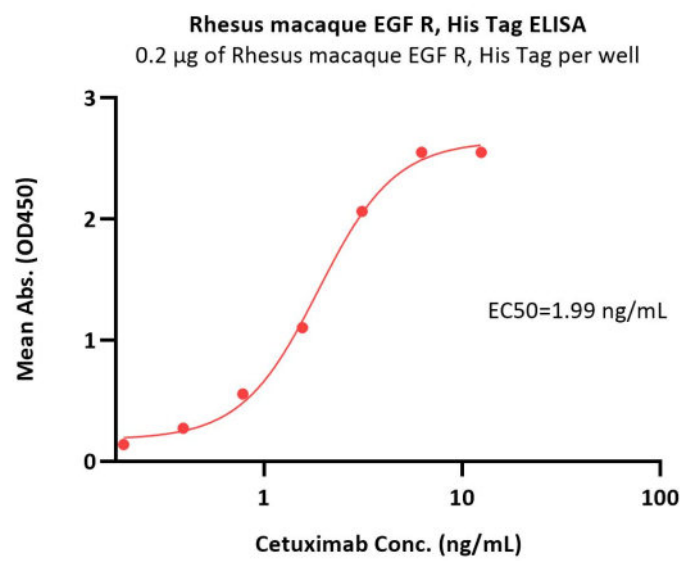


The purity of Rhesus macaque EGF R, His Tag (Cat. No. EGR-C52H1) is more than 90% and the molecular weight of this protein is around 85-110 kDa verified by SEC-MALS.

[Report](#)

Discounts, Gifts,  
and more!





Immobilized Rhesus macaque EGF R, His Tag (Cat. No. EGR-C52H1) at 2 µg/mL (100 µL/well) can bind Cetuximab with a linear range of 0.2-3 ng/mL (QC tested).

## Background

The epidermal growth factor receptor (EGFR; ErbB-1; HER1 in humans) is the cell-surface receptor for members of the epidermal growth factor family (EGF-family) of extracellular protein ligands. The epidermal growth factor receptor is a member of the ErbB family of receptors, a subfamily of four closely related receptor tyrosine kinases: EGFR (ErbB-1), HER2/c-neu (ErbB-2), Her 3 (ErbB-3) and Her 4 (ErbB-4). Mutations affecting EGFR expression or activity could result in cancer.

## Clinical and Translational Updates

Discounts, Gifts,  
and more!

