



## Synonym

EPCAM, TACSTD1, TROP1, CD326, DIAR5, EGP2, EGP314, EGP40, ESA, GA733-2, HNPCC8, HNPCC-8, KS1, 4, KSA, M4S1, MIC18, MK1

## Source

Human EpCAM, His Tag(EPM-H5223) is expressed from human 293 cells (HEK293). It contains AA Gln 24 - Lys 265 (Accession # [AAH14785.1](#)).  
Predicted N-terminus: Gln 24

## Molecular Characterization

EpCAM(Gln 24 - Lys 265)  
AAH14785.1 Poly-his

This protein carries a polyhistidine tag at the C-terminus.

The protein has a calculated MW of 28.2 kDa. The protein migrates as 31-40 kDa when calibrated against [Star Ribbon Pre-stained Protein Marker](#) under reducing (R) condition (SDS-PAGE) due to glycosylation.

## Endotoxin

Less than 0.1 EU per µg by the LAL method.

## Purity

>95% as determined by SDS-PAGE.

## Formulation

Lyophilized from 0.22 µm filtered solution in PBS, pH7.4 with trehalose as protectant.

Contact us for customized product form or formulation.

## Reconstitution

Please see Certificate of Analysis for specific instructions.

*For best performance, we strongly recommend you to follow the reconstitution protocol provided in the CoA.*

## Storage

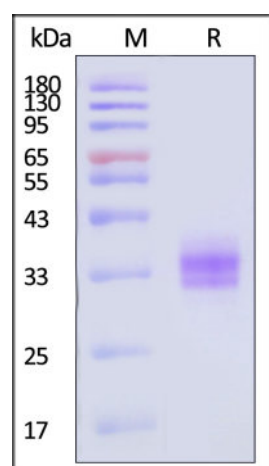
For long term storage, the product should be stored at lyophilized state at -20°C or lower.

*Please avoid repeated freeze-thaw cycles.*

This product is stable after storage at:

- -20°C to -70°C for 12 months in lyophilized state;
- -70°C for 3 months under sterile conditions after reconstitution.

## SDS-PAGE

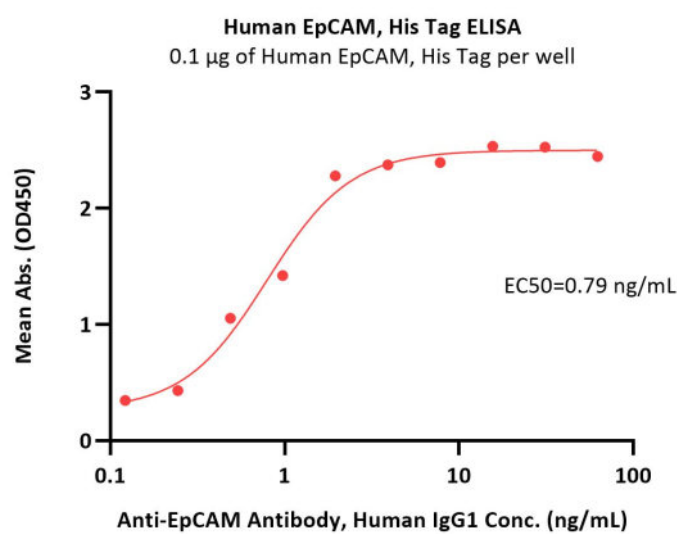


Human EpCAM, His Tag on SDS-PAGE under reducing (R) condition. The gel was stained with Coomassie Blue. The purity of the protein is greater than 95% (With [Star Ribbon Pre-stained Protein Marker](#)).

## Bioactivity-ELISA

Discounts, Gifts,  
and more!





Immobilized Human EpCAM, His Tag (Cat. No. EPM-H5223) at 1  $\mu$ g/mL (100  $\mu$ L/well) can bind Anti-EpCAM Antibody, Human IgG1 with a linear range of 0.1-2 ng/mL (QC tested).

## Background

EpCAM is also known as CO171A, EGP, EGP40, GA7332, KSA, M4S, MIC18, MK1, TROP1, hEGP2, and is a pan-epithelial differentiation antigen that is expressed on almost all carcinomas as 17-1A(mAb) antigen. Its constitutional function is being elucidated. It is intricately linked with the Cadherin-Catenin pathway and hence the fundamental WNT pathway responsible for intracellular signaling and polarity. The epithelial cell adhesion molecule (Ep-CAM) is known to express in most epithelial malignancies and was reported as a tumor marker or a candidate of molecular targeting therapy.

Ep-CAM cross signaling with N-cadherin involves Pi3K, resulting in the abrogation of the cadherin adhesion complexes in epithelial cells was reported. And Epithelial cell adhesion molecule (Ep-CAM) recently received increased attention as a prognostic factor in breast cancer.

## Clinical and Translational Updates

Discounts, Gifts,  
and more!

