



## Synonym

FZD2, Frizzled-2, Fz-2, hFz2, FzE2

## Source

Human Frizzled-2, Fc Tag(FZ2-H5251) is expressed from human 293 cells (HEK293). It contains AA Gln 24 - Ser 156 (Accession # [AAI13403](#)).

Predicted N-terminus: Gln 24

## Molecular Characterization

Frizzled-2(Gln 24 - Ser 156) AAI13403	Fc(Pro 100 - Lys 330) P01857
--	---------------------------------

This protein carries a human IgG1 Fc tag at the C-terminus.

The protein has a calculated MW of 41.7 kDa. The protein migrates as 50-55 kDa under reducing (R) condition (SDS-PAGE) due to glycosylation.

## Endotoxin

Less than 1.0 EU per µg by the LAL method.

## Purity

>95% as determined by SDS-PAGE.

## Formulation

Lyophilized from 0.22 µm filtered solution in

Tris with Glycine, Arginine and NaCl, pH7.5 with trehalose as protectant.

Contact us for customized product form or formulation.

## Reconstitution

Please see Certificate of Analysis for specific instructions.

*For best performance, we strongly recommend you to follow the reconstitution protocol provided in the CoA.*

## Storage

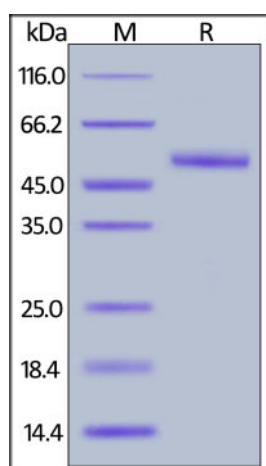
For long term storage, the product should be stored at lyophilized state at -20°C or lower.

*Please avoid repeated freeze-thaw cycles.*

This product is stable after storage at:

- -20°C to -70°C for 12 months in lyophilized state;
- -70°C for 3 months under sterile conditions after reconstitution.

## SDS-PAGE

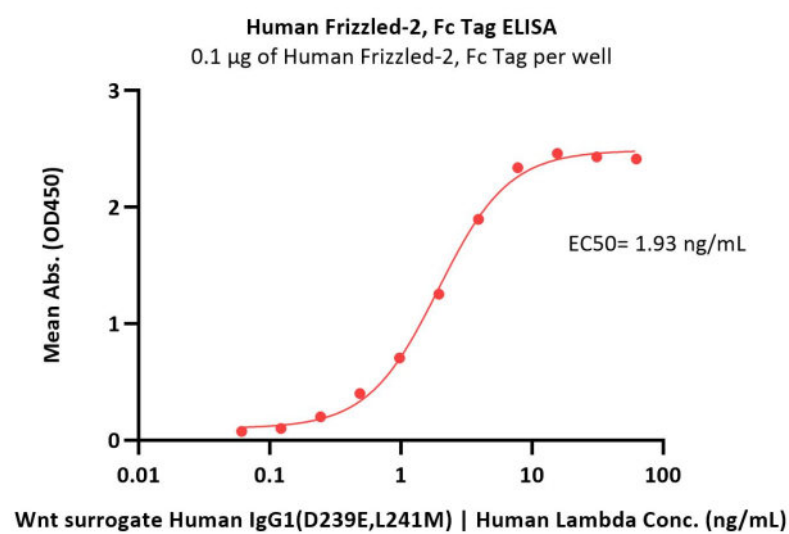


Human Frizzled-2, Fc Tag on SDS-PAGE under reducing (R) condition. The gel was stained with Coomassie Blue. The purity of the protein is greater than 95%.

## Bioactivity-ELISA

Discounts, Gifts,  
and more!





Immobilized Human Frizzled-2, Fc Tag (Cat. No. FZ2-H5251) at 1 µg/mL (100 µL/well) can bind Wnt surrogate Human IgG1(D239E,L241M) | Human Lambda with a linear range of 0.1-8 ng/mL (QC tested).

## Background

Frizzled-2 (FZD2) is also known as FzE2, which belongs to the G-protein coupled receptor Fz/Smo family. Most of frizzled receptors are coupled to the beta-catenin canonical signaling pathway, which leads to the activation of disheveled proteins, inhibition of GSK-3 kinase, nuclear accumulation of beta-catenin and activation of Wnt target genes. FZD2 contains one FZ (frizzled) domain. FZD2 may be involved in transduction and intercellular transmission of polarity information during tissue morphogenesis and/or in differentiated tissues. The Lys-Thr-X-X-X-Trp motif of FZD2 interacts with the PDZ domain of Dvl (Disheveled) family members and is involved in the activation of the Wnt/beta-catenin signaling pathway.

## Clinical and Translational Updates

Discounts, Gifts,  
and more!

