



Synonym

Growth Hormone,GH,GH1,Somatotropin,GH-N

Source

Human GH, premium grade(GH1-H4118) is expressed from E. coli cells. It contains AA Phe 27 - Phe 217 (Accession # [P01241-1](#)).

Predicted N-terminus: Met

It is produced under our rigorous quality control system that incorporates a comprehensive set of tests including sterility and endotoxin tests. Product performance is carefully validated and tested for compatibility for cell culture use or any other applications in the early preclinical stage. When ready to transition into later clinical phases, we also offer a custom GMP protein service that tailors to your needs. We will work with you to customize and develop a GMP-grade product in accordance with your requests that also meets the requirements for raw and ancillary materials use in cell manufacturing of cell-based therapies.

Molecular Characterization

GH(Phe 27 - Phe 217)
P01241-1

This protein carries no "tag".

The protein has a calculated MW of 22.3 kDa. The protein migrates as 21-22 kDa when calibrated against [Star Ribbon Pre-stained Protein Marker](#) under reducing (R) condition (SDS-PAGE).

Endotoxin

Less than 0.1 EU per µg by the LAL method.

Host Cell Protein

<0.5 ng/µg of protein tested by ELISA.

Sterility

Negative

Mycoplasma

Negative.

Purity

>95% as determined by SDS-PAGE.

Formulation

Supplied as 0.2 µm filtered solution in 20 mM Tris,500 mM NaCl,0.2 M Arginine,pH7.5 with Glycerol as protectant.

Contact us for customized product form or formulation.

Shipping

This product is supplied and shipped with dry ice, please inquire the shipping cost.

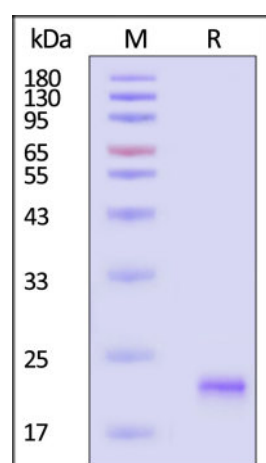
Storage

Please avoid repeated freeze-thaw cycles.

This product is stable after storage at:

- -70°C for 24 months under sterile conditions.

SDS-PAGE



Human GH, premium grade on SDS-PAGE under reducing (R) condition. The gel was stained with Coomassie Blue. The purity of the protein is greater than

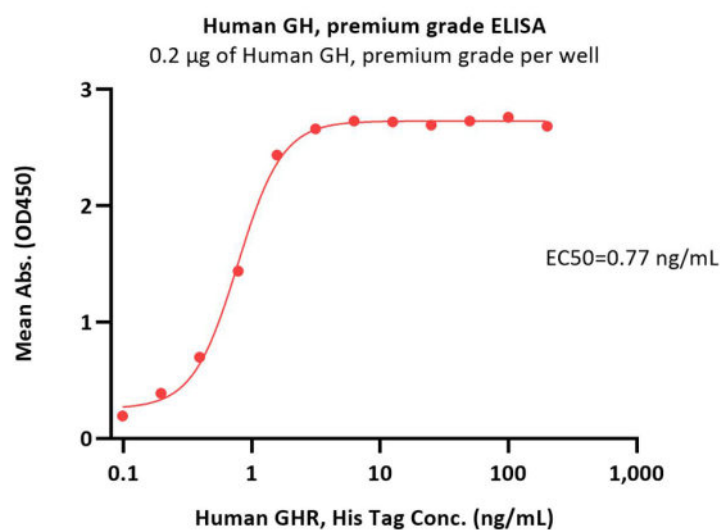
Discounts, Gifts,
and more!





95% (With [Star Ribbon Pre-stained Protein Marker](#)).

Bioactivity-ELISA



Immobilized Human GH, premium grade (Cat. No. GH1-H4118) at 2 µg/mL (100 µL/well) can bind Human GHR, His Tag (Cat. No. GHR-H5222) with a linear range of 0.1-2 ng/mL (QC tested).

Background

Growth hormone (GH or GH-N) is also known as Somatotropin, Pituitary growth hormone. GH belongs to the somatotropin/prolactin family. Growth hormone (GH) may form monomer, dimer, trimer, tetramer and pentamer, by disulfide-linked or non-covalently associated, in homopolymeric and heteropolymeric combinations. GH can also form a complex either with GHP or with the alpha2-macroglobulin complex. Growth hormone (GH) plays an important role in growth control. Its major role in stimulating body growth is to stimulate the liver and other tissues to secrete IGF-1. It stimulates both the differentiation and proliferation of myoblasts. It also stimulates amino acid uptake and protein synthesis in muscle and other tissues.

Clinical and Translational Updates

Discounts, Gifts,
and more!

