



Synonym

GPC3,OCI5,Glypican-3,GTR2-2,MXR7,DGSX,SDYS ,SGB,SGBS,SGBS1

Source

Human Glypican 3 Protein, Fc Tag(GP3-H5258) is expressed from human 293 cells (HEK293). It contains AA Gln 25 - His 559 (Accession # [P51654-1](#)).

Predicted N-terminus: Gln 25 & Ser 359

Molecular Characterization

Glypican 3(Gln 25 - His 559) P51654-1	Fc(Pro 100 - Lys 330) P01857
--	---------------------------------

This protein carries a human IgG1 Fc tag at the C-terminus.

This protein contains a furin-like convertase cleavage site, 355-RQYR-358, and will be partially processed into N and C-terminal fragment with calculated MW of 38.1 kDa and 49.3 kDa respectively. The protein migrates as 40 kDa, 60 kDa and 100-120 kDa under reducing (R) condition (SDS-PAGE) due to glycosylation.

Endotoxin

Less than 0.1 EU per µg by the LAL method.

Purity

>90% as determined by SDS-PAGE.

>90% as determined by SEC-MALS.

Formulation

Lyophilized from 0.22 µm filtered solution in Tris with Glycine, Arginine and NaCl, pH7.5 with trehalose as protectant.

Contact us for customized product form or formulation.

Reconstitution

Please see Certificate of Analysis for specific instructions.

For best performance, we strongly recommend you to follow the reconstitution protocol provided in the CoA.

Storage

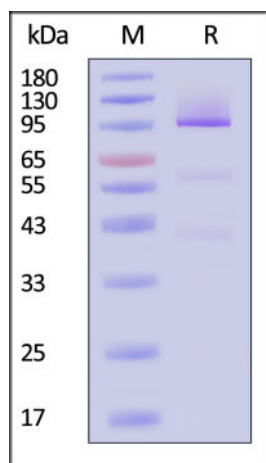
For long term storage, the product should be stored at lyophilized state at -20°C or lower.

Please avoid repeated freeze-thaw cycles.

This product is stable after storage at:

- -20°C to -70°C for 12 months in lyophilized state;
- -70°C for 3 months under sterile conditions after reconstitution.

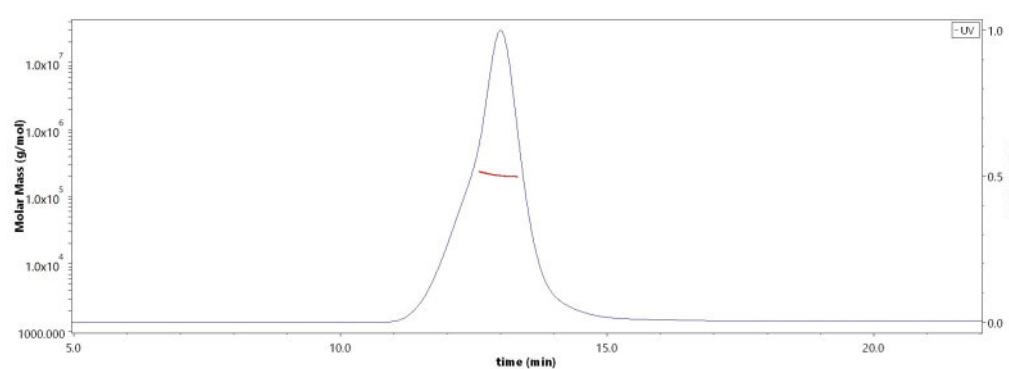
SDS-PAGE



Human Glypican 3 Protein, Fc Tag on SDS-PAGE under reducing (R) condition. The gel was stained with Coomassie Blue. The purity of the protein is greater than 90% (With [Star Ribbon Pre-stained Protein Marker](#)).

Bioactivity-ELISA

SEC-MALS

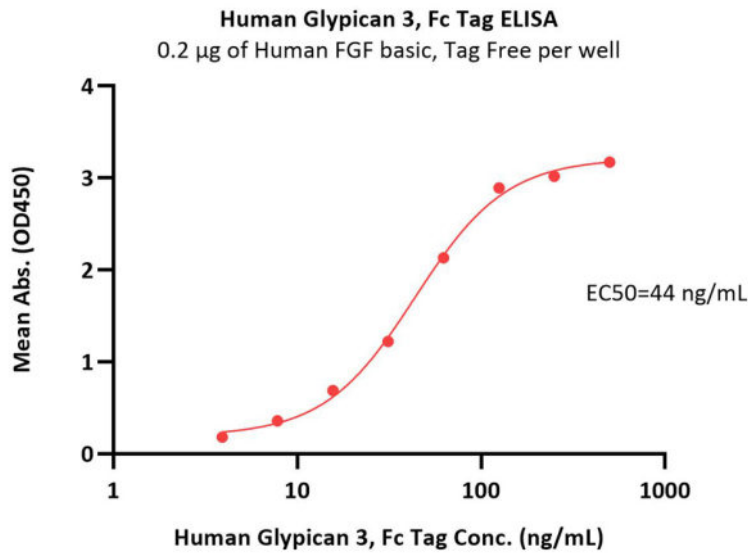


The purity of Human Glypican 3 Protein, Fc Tag (Cat. No. GP3-H5258) is more than 90% and the molecular weight of this protein is around 170-210 kDa verified by SEC-MALS.

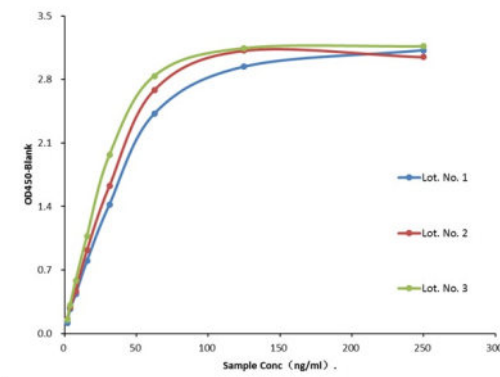
[Report](#)

Discounts, Gifts,
and more!



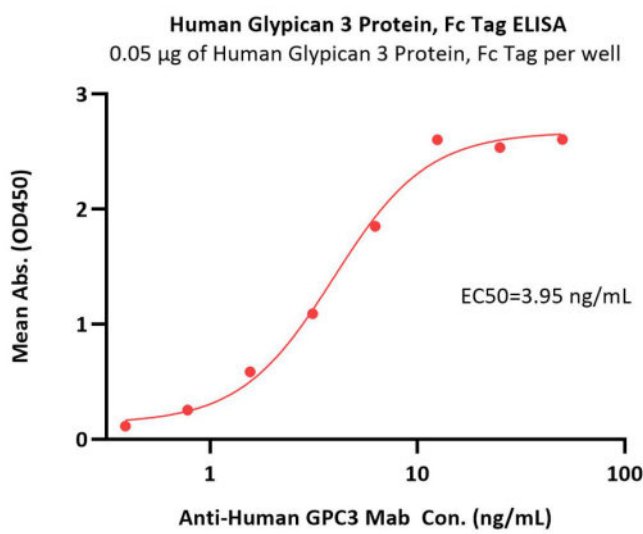


Batch consistency



Lot No.	EC50(µg/mL)
Lot No. 1	0.0299
Lot No. 2	0.0351
Lot No. 3	0.0249

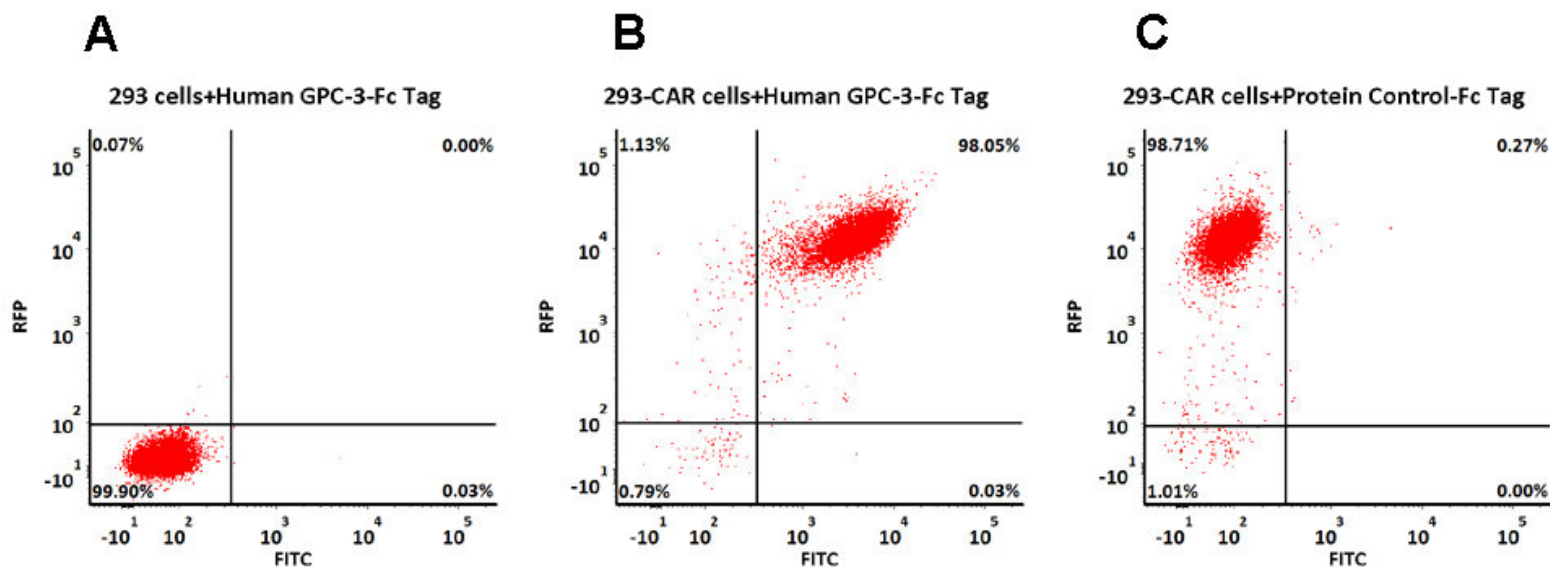
Immobilized Human FGF basic, premium grade (Cat. No. BFF-H4117) at 2 µg/mL (100 µL/well) can bind Human Glypican 3 Protein, Fc Tag (Cat. No. GP3-H5258) with a linear range of 4-63 ng/mL (QC tested).



Immobilized Human Glypican 3 Protein, Fc Tag (Cat. No. GP3-H5258) at 0.5 µg/mL (100 µL/well) can bind Anti-Human GPC3 Mab with a linear range of 0.8-6 ng/mL (Routinely tested).

Evaluation of CAR expression

FACS Analysis of Anti-GPC3 CAR Expression



293 cells were transfected with anti-GPC3-scFv and RFP tag. 2e5 of the cells were first stained with B. Human Glypican 3 Protein, Fc Tag (Cat. No. GP3-H5258, 3 µg/ml) and C. human Fc tag protein control, followed by FITC-conjugated anti-human IgG Fc antibody. A. Non-transfected 293 cells and C. human Fc tag protein

Discounts, Gifts,
and more!



Human Glypican 3 / GPC3 Protein, Fc Tag (MALS verified)

Catalog # GP3-H5258



BIOSYSTEMS
Acro

control were used as negative control. RFP was used to evaluate CAR (anti-GPC3-scFv) expression and FITC was used to evaluate the binding activity of Human Glypican 3 Protein, Fc Tag (Cat. No. GP3-H5258).

Background

Glypican-3 (GPC3) is also known as Intestinal protein OCI-5, GTR2-2, MXR7, which belongs to the glypican family. Glypican 3 / GPC-3 is highly expressed in lung, liver and kidney. Glypican-3 inhibits the dipeptidyl peptidase activity of DPP4. Glypican-3 may be involved in the suppression/modulation of growth in the predominantly mesodermal tissues and organs, and also may play a role in the modulation of IGF2 interactions with its receptor and thereby modulate its function.

Clinical and Translational Updates

Discounts, Gifts,
and more!



www.acrobiosystems.com

9/23/2024