

Synonym

EBI3,IL35,IL-35EBI3,IL35p35,Interleukin-35,IL-35

Source

Human IL-35, Fc Tag(IL5-H5259) is expressed from human 293 cells (HEK293). It contains AA Arg 21 - Lys 229 (IL-27 beta) & Arg 23 - Ser 219 (IL-12 alpha) (Accession # [Q14213-1](#) (IL-27 beta) & [P29459-1](#) (IL-12 alpha)). Predicted N-terminus: Arg 21

Molecular Characterization

This protein carries a human IgG1 Fc tag at the C-terminus

The protein has a calculated MW of 73.3 kDa. The protein migrates as 80-90 kDa under reducing (R) condition (SDS-PAGE) due to glycosylation.

Endotoxin

Less than 1.0 EU per µg by the LAL method.

Purity

>90% as determined by SDS-PAGE.

Formulation

Lyophilized from 0.22 µm filtered solution in PBS, pH7.4 with trehalose as protectant.

Contact us for customized product form or formulation.

Reconstitution

Please see Certificate of Analysis for specific instructions.

For best performance, we strongly recommend you to follow the reconstitution protocol provided in the CoA.

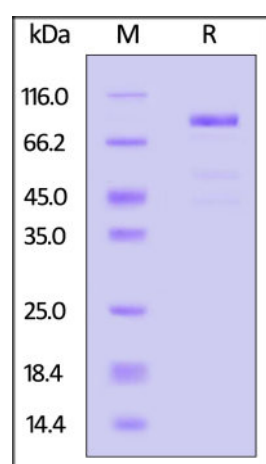
Storage

For long term storage, the product should be stored at lyophilized state at -20°C or lower.

Please avoid repeated freeze-thaw cycles.

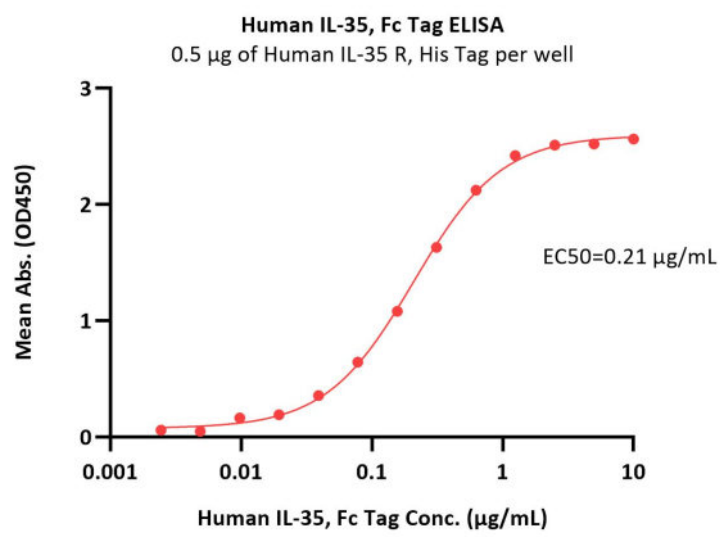
This product is stable after storage at:

- -20°C to -70°C for 12 months in lyophilized state;
- -70°C for 3 months under sterile conditions after reconstitution.

SDS-PAGE

Human IL-35, Fc Tag on SDS-PAGE under reducing (R) condition. The gel was stained with Coomassie Blue. The purity of the protein is greater than 90%.

Bioactivity-ELISA



Immobilized Human IL-35 R, His Tag (Cat. No. ILR-H52H8) at 5 µg/mL (100 µL/well) can bind Human IL-35, Fc Tag (Cat. No. IL5-H5259) with a linear range of 0.002-0.625 µg/mL (QC tested).

Background

Interleukin 35 (IL-35) is a recently discovered anti-inflammatory cytokine from the IL-12 family. Member of IL-12 family - IL-35 is produced by wide range of regulatory lymphocytes and plays a role in immune suppression. IL-35 can block the development of Th1 and Th17 cells by limiting early T cell proliferation. The heterodimeric cytokine of IL-35 involves two subunits of p35 and Ebi3 which are also seen in IL-12 and IL-27. IL-35 is recognized as a definite immunosuppressor with a huge potent of suppression.

Clinical and Translational Updates

Please contact us via TechSupport@acrobiosystems.com if you have any question on this product.