



## Synonym

IL-17A, Interleukin-17A, CTLA-8, IL-17

## Source

Canine IL-17A, His Tag (ILA-C52H7) is expressed from human 293 cells (HEK293). It contains AA Gly 26 - Ala 155 (Accession # [C6L8D7-1](#)).

## Molecular Characterization

Poly-his IL-17A(Gly 26 - Ala 155)  
C6L8D7-1

This protein carries a polyhistidine tag at the N-terminus.

The protein has a calculated MW of 17.0 kDa. The protein migrates as 18 kDa and 22 kDa under reducing (R) condition (SDS-PAGE) due to glycosylation.

## Endotoxin

Less than 1.0 EU per µg by the LAL method.

## Purity

>90% as determined by SDS-PAGE.

## Formulation

Lyophilized from 0.22 µm filtered solution in PBS, pH7.4 with trehalose as protectant.

Contact us for customized product form or formulation.

## Reconstitution

Please see Certificate of Analysis for specific instructions.

*For best performance, we strongly recommend you to follow the reconstitution protocol provided in the CoA.*

## Storage

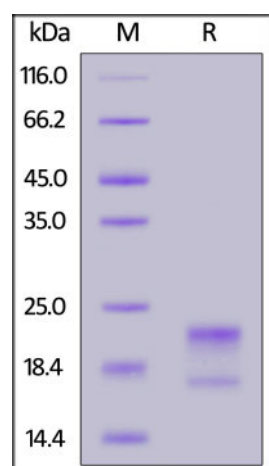
For long term storage, the product should be stored at lyophilized state at -20°C or lower.

*Please avoid repeated freeze-thaw cycles.*

This product is stable after storage at:

- -20°C to -70°C for 12 months in lyophilized state;
- -70°C for 3 months under sterile conditions after reconstitution.

## SDS-PAGE

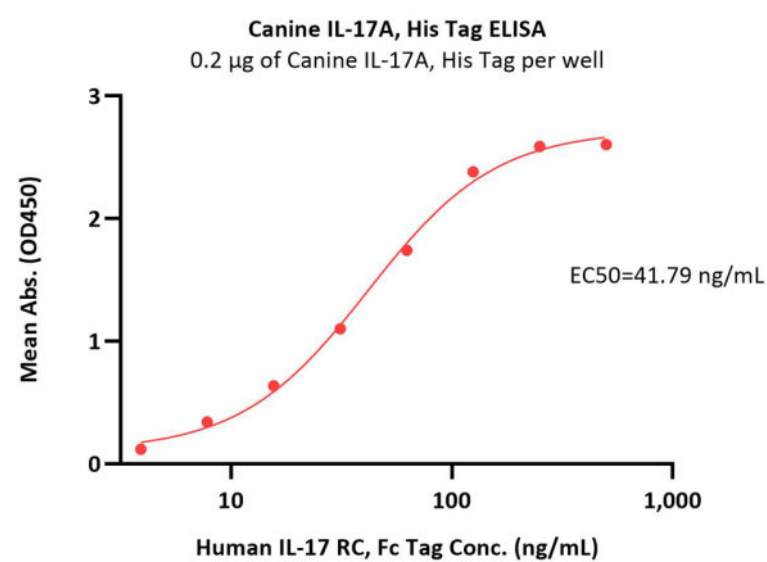
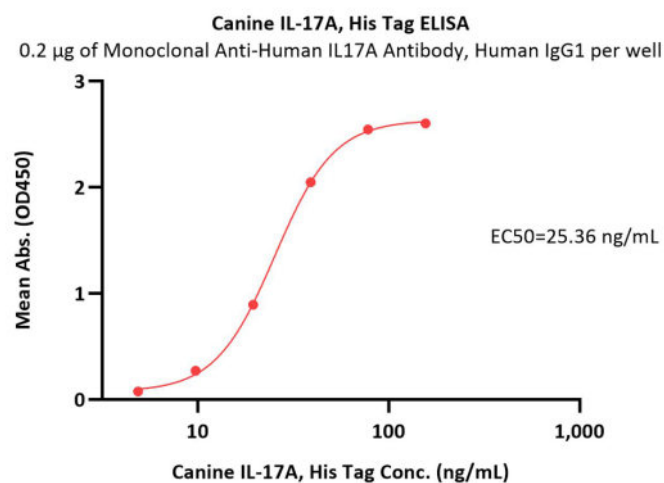


Canine IL-17A, His Tag on SDS-PAGE under reducing (R) condition. The gel was stained with Coomassie Blue. The purity of the protein is greater than 90%.

## Bioactivity-ELISA

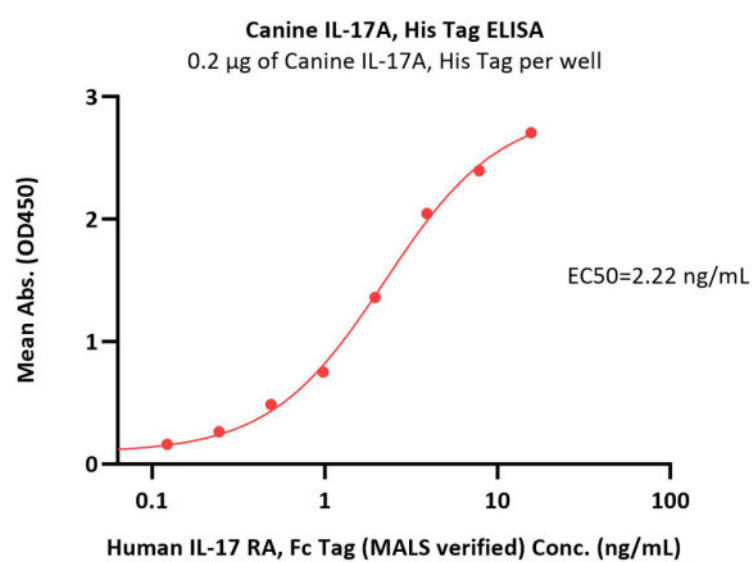
Discounts, Gifts,  
and more!





Immobilized Monoclonal Anti-Human IL17A Antibody, Human IgG1 at 2 µg/mL (100 µL/well) can bind Canine IL-17A, His Tag (Cat. No. ILA-C52H7) with a linear range of 5-39 ng/mL (QC tested).

Immobilized Canine IL-17A, His Tag (Cat. No. ILA-C52H7) at 2 µg/mL (100 µL/well) can bind Human IL-17 RC, Fc Tag (Cat. No. ILC-H5259) with a linear range of 4-63 ng/mL (Routinely tested).



Immobilized Canine IL-17A, His Tag (Cat. No. ILA-C52H7) at 2 µg/mL (100 µL/well) can bind Human IL-17 RA, Fc Tag (MALS verified) with a linear range of 0.1-4 ng/mL (Routinely tested).

## Background

Interleukin-17A (IL17A) is also known as cytotoxic T-lymphocyte-associated antigen 8 (CTLA8), which is a proinflammatory cytokine produced by activated T cells. IL17A can regulate the activities of NF-kappaB and mitogen-activated protein kinases. Also, IL17A can stimulate the expression of IL6 and cyclooxygenase-2 (PTGS2/COX-2), as well as enhance the production of nitric oxide (NO). Furthermore, IL17A has been found both in glycosylated and nonglycosylated forms. High levels of IL-17 are associated with several chronic inflammatory diseases including rheumatoid arthritis, psoriasis and multiple sclerosis.

## Clinical and Translational Updates

Discounts, Gifts,  
and more!

