



Synonym

IL-17F, Interleukin-17F, Cytokine ML-1

Source

Mouse IL-17F, His Tag (ILF-M5249) is expressed from human 293 cells (HEK293). It contains AA Arg 29 - Ala 161 (Accession # [Q7TNI7-1](#)).

Predicted N-terminus: His

Molecular Characterization

Poly-his IL-17F(Arg 29 - Ala 161)
Q7TNI7-1

This protein carries a polyhistidine tag at the N-terminus.

The protein has a calculated MW of 16.8 kDa. The protein migrates as 24-25 kDa and 27-28 kDa under reducing (R) condition (SDS-PAGE) due to glycosylation.

Endotoxin

Less than 0.1 EU per µg by the LAL method.

Purity

>90% as determined by SDS-PAGE.

Formulation

Lyophilized from 0.22 µm filtered solution in PBS, pH7.4 with trehalose as protectant.

Contact us for customized product form or formulation.

Reconstitution

Please see Certificate of Analysis for specific instructions.

For best performance, we strongly recommend you to follow the reconstitution protocol provided in the CoA.

Storage

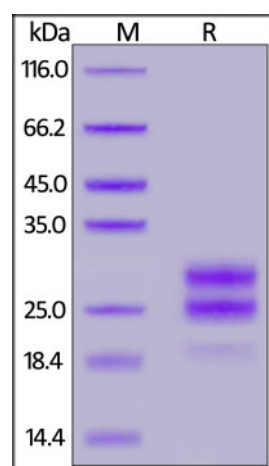
For long term storage, the product should be stored at lyophilized state at -20°C or lower.

Please avoid repeated freeze-thaw cycles.

This product is stable after storage at:

- -20°C to -70°C for 12 months in lyophilized state;
- -70°C for 3 months under sterile conditions after reconstitution.

SDS-PAGE



Mouse IL-17F, His Tag on SDS-PAGE under reducing (R) condition. The gel was stained with Coomassie Blue. The purity of the protein is greater than 90%.

Bioactivity-SPR

Discounts, Gifts,
and more!

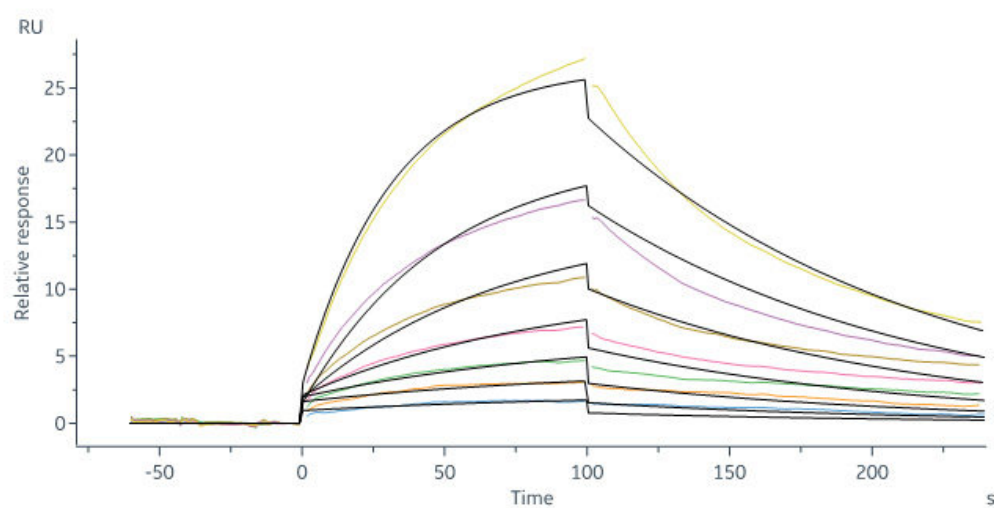


Mouse IL-17F Protein, His Tag

Catalog # ILF-M5249



BIOSYSTEMS
Acro
Surprise Inside!



Human IL-17 RA, Fc Tag captured on CM5 chip via Anti-human IgG Fc antibodies surface can bind Mouse IL-17F, His Tag (Cat. No. ILF-M5249) with an affinity constant of 2.99 μ M as determined in a SPR assay (Biacore 8K) (Routinely tested).

Background

Interleukin-17F (IL17F) is also known as Interleukin-24 (IL24), Cytokine ML-1, is a secreted disulfide-linked homodimer which belongs to the IL-17 family. There are at least six members of the IL-17 family in humans and in mice: IL-17A, IL-17B, IL-17C, IL-17D, IL-17E (also called IL-25) and IL-17F (also called IL-24). IL-17 represents a family of structurally related cytokines that share a highly conserved C-terminal region but differ from one another in their N-terminal regions and in their distinct biological roles. IL-17F / IL-24 is expressed in activated, but not resting, CD4⁺ T-cells and activated monocytes. IL17F / Interleukin-24 stimulates the production of other cytokines such as IL-6, IL-8 and granulocyte colony-stimulating factor, and can regulate cartilage matrix turnover. IL17F / IL-24 stimulates PBMC and T-cell proliferation and Inhibits angiogenesis. Defects in IL17F are the cause of familial candidiasis type 6 (CANDF6).

Clinical and Translational Updates

Discounts, Gifts,
and more!



➤ www.acrobiosystems.com

6/11/2024