



Synonym

IL-35 R, gp130 & IL12Rb2, CD130 & IL12Rb2, IL-6RB & IL12Rb2, gp130 & IL12Rb2

Source

Human IL-35 R, His Tag (ILR-H52H8) is expressed from human 293 cells (HEK293). It contains AA Glu 23 - Glu 619 & Lys 24 - Asn 622 (Accession # [P40189-1](#) (gp130) & [Q99665-1](#) (IL12Rb2)).

Predicted N-terminus: Glu 23 & Lys 24

Molecular Characterization

This protein carries a polyhistidine tag at the C-terminus. The protein has a calculated MW of 73.1 kDa & 71.5 kDa. The protein migrates as 95-130 kDa when calibrated against [Star Ribbon Pre-stained Protein Marker](#) under reducing (R) condition (SDS-PAGE) due to glycosylation.

Endotoxin

Less than 1.0 EU per µg by the LAL method.

Purity

>95% as determined by SDS-PAGE.

>90% as determined by SEC-MALS.

Formulation

Lyophilized from 0.22 µm filtered solution in PBS, pH7.4 with trehalose as protectant.

Contact us for customized product form or formulation.

Reconstitution

Please see Certificate of Analysis for specific instructions.

For best performance, we strongly recommend you to follow the reconstitution protocol provided in the CoA.

Storage

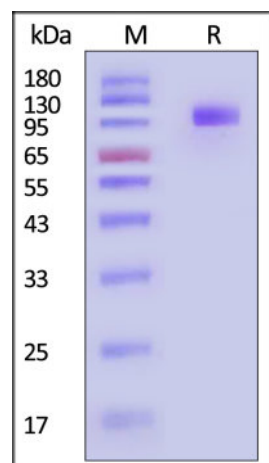
For long term storage, the product should be stored at lyophilized state at -20°C or lower.

Please avoid repeated freeze-thaw cycles.

This product is stable after storage at:

- -20°C to -70°C for 12 months in lyophilized state;
- -70°C for 3 months under sterile conditions after reconstitution.

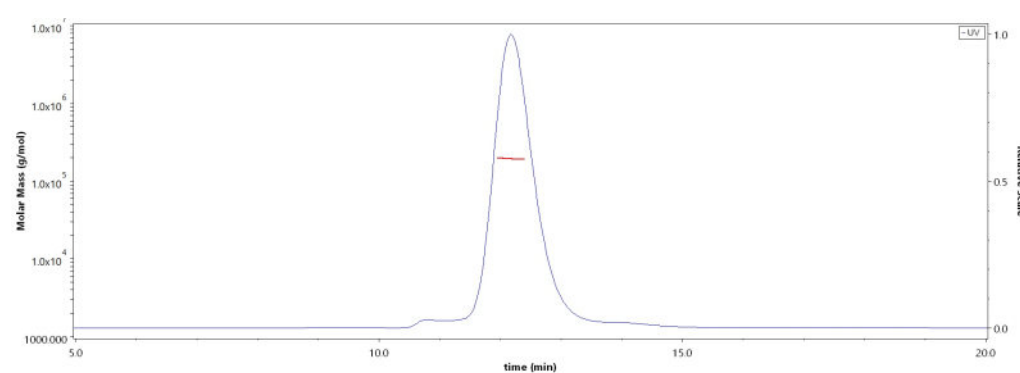
SDS-PAGE



Human IL-35 R, His Tag on SDS-PAGE under reducing (R) condition. The gel was stained with Coomassie Blue. The purity of the protein is greater than 95% (With [Star Ribbon Pre-stained Protein Marker](#)).

Bioactivity-ELISA

SEC-MALS

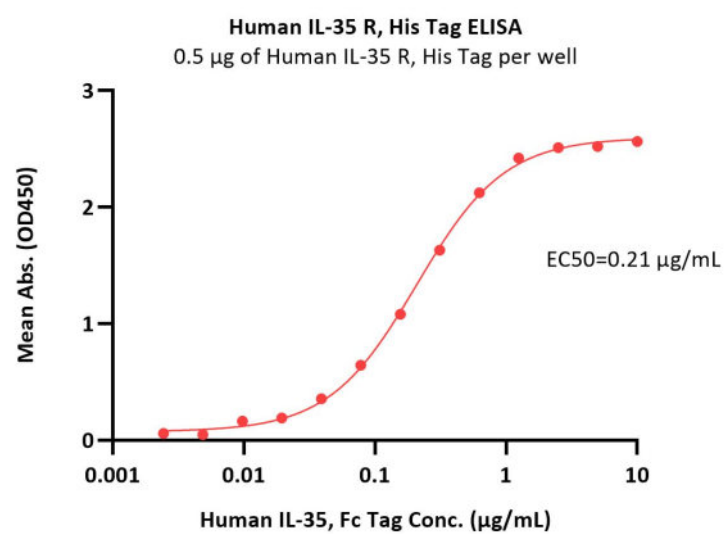


The purity of Human IL-35 R, His Tag (Cat. No. ILR-H52H8) is more than 90% and the molecular weight of this protein is around 185-215 Kda verified by SEC-MALS.

[Report](#)

Discounts, Gifts,
and more!





Immobilized Human IL-35 R, His Tag (Cat. No. ILR-H52H8) at 5 µg/mL (100 µL/well) can bind Human IL-35, Fc Tag (Cat. No. IL5-H5259) with a linear range of 0.002-0.625 µg/mL (QC tested).

Background

Interleukin 35 (IL-35) is a recently discovered anti-inflammatory cytokine from the IL-12 family. Member of IL-12 family - IL-35 is produced by wide range of regulatory lymphocytes and plays a role in immune suppression. IL-35 can block the development of Th1 and Th17 cells by limiting early T cell proliferation. The heterodimeric cytokine of IL-35 involves two subunits of p35 and Ebi3 which are also seen in IL-12 and IL-27. IL-35 is recognized as a definite immunosuppressor with a huge potent of suppression.

Clinical and Translational Updates

Discounts, Gifts,
and more!

