



### Synonym

Integrin alpha 8 beta 1, ITGA8&ITGB1

### Source

Human ITGA8&ITGB1 Heterodimer Protein, Twin-Strep Tag&Tag Free (IT1-H5283) is expressed from human 293 cells (HEK293). It contains AA Phe 39 – Leu 1012 & Gln 21 - Asp 728 (Accession # [P53708-1](#) & [P05556-1](#) ).

Predicted N-terminus: Phe 39 & Gln 21

### Molecular Characterization

ITGA8 (Phe 39 – Leu 1012) P53708-1	Strep II
ITGB1 (Gln 21 - Asp 728) P05556-1	

The protein has a calculated MW of 116.4 kDa & 83.7 kDa. The protein migrates as 95-110 kDa and 150-180 kDa when calibrated against [Star Ribbon Pre-stained Protein Marker](#) under non-reducing (NR) condition (SDS-PAGE) due to glycosylation.

### Endotoxin

Less than 1.0 EU per µg by the LAL method.

### Purity

>95% as determined by SDS-PAGE.

### Formulation

Lyophilized from 0.22 µm filtered solution in 50 mM Tris, 150 mM NaCl, pH7.4 with trehalose as protectant.

Contact us for customized product form or formulation.

### Reconstitution

Please see Certificate of Analysis for specific instructions.

*For best performance, we strongly recommend you to follow the reconstitution protocol provided in the CoA.*

### Storage

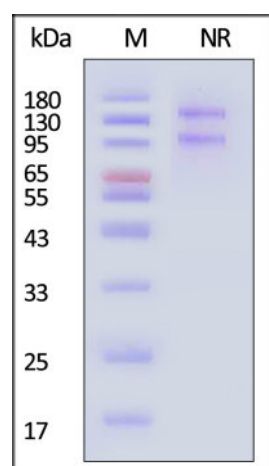
For long term storage, the product should be stored at lyophilized state at -20°C or lower.

*Please avoid repeated freeze-thaw cycles.*

This product is stable after storage at:

- -20°C to -70°C for 12 months in lyophilized state;
- -70°C for 3 months under sterile conditions after reconstitution.

### SDS-PAGE

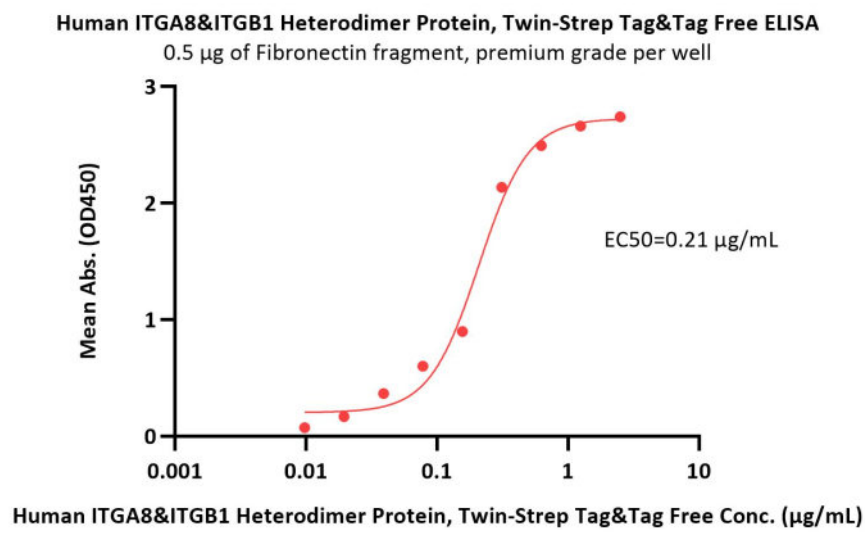


Human ITGA8&ITGB1 Heterodimer Protein, Twin-Strep Tag&Tag Free on SDS-PAGE under non-reducing (NR) condition. The gel was stained with Coomassie Blue. The purity of the protein is greater than 95% (With [Star Ribbon Pre-stained Protein Marker](#)).

### Bioactivity-ELISA

Discounts, Gifts,  
and more!





Immobilized Fibronectin fragment, premium grade (Cat. No. FIN-H5113) at 5 µg/mL (100 µL/well) can bind Human ITGA8&ITGB1 Heterodimer Protein, Twin-Strep Tag&Tag Free (Cat. No. IT1-H5283) with a linear range of 0.01-0.3 µg/mL (QC tested).

## Background

Human Integrin alpha 8 beta 1 Heterodimer Protein consists of ITGA8 and ITGB1. The integrin alpha 8 subunit, isolated by low stringency hybridization, is a novel integrin subunit that associates with beta 1. The recently identified alpha 8 integrin subunit associates with beta 1 and is predominantly expressed in smooth muscle and other contractile cells in adult tissues, and in mesenchymal and neural cells during development. In addition, Integrin alpha 8 beta 1 is a receptor for fibronectin and can promote attachment, cell spreading, and neurite outgrowth on fibronectin.

## Clinical and Translational Updates

Discounts, Gifts,  
and more!

