



### Synonym

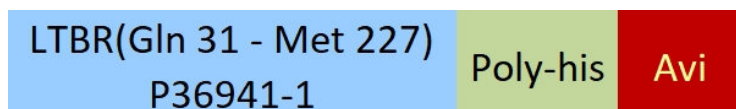
LTBR,D12S370,TNFCR,TNFR3,TNFRSF3,TNFRIII

### Source

Human LTBR Protein, His,Avitag(LTR-H52E3) is expressed from human 293 cells (HEK293). It contains AA Gln 31 - Met 227 (Accession # [P36941-1](#) ).

Predicted N-terminus: Gln 31

### Molecular Characterization



This protein carries a polyhistidine tag at the C-terminus, followed by an Avi tag (Avitag™).

The protein has a calculated MW of 25.3 kDa. The protein migrates as 33-35 kDa and 37-40 kDa when calibrated against [Star Ribbon Pre-stained Protein Marker](#) under reducing (R) condition (SDS-PAGE) due to glycosylation.

### Endotoxin

Less than 1.0 EU per µg by the LAL method.

### Purity

>90% as determined by SDS-PAGE.

>90% as determined by SEC-MALS.

### Formulation

Lyophilized from 0.22 µm filtered solution in PBS, pH7.4 with trehalose as protectant.

Contact us for customized product form or formulation.

### Reconstitution

Please see Certificate of Analysis for specific instructions.

*For best performance, we strongly recommend you to follow the reconstitution protocol provided in the CoA.*

### Storage

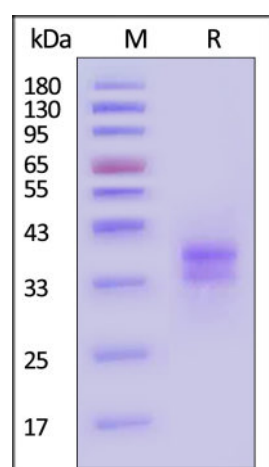
For long term storage, the product should be stored at lyophilized state at -20°C or lower.

*Please avoid repeated freeze-thaw cycles.*

This product is stable after storage at:

- -20°C to -70°C for 12 months in lyophilized state;
- -70°C for 3 months under sterile conditions after reconstitution.

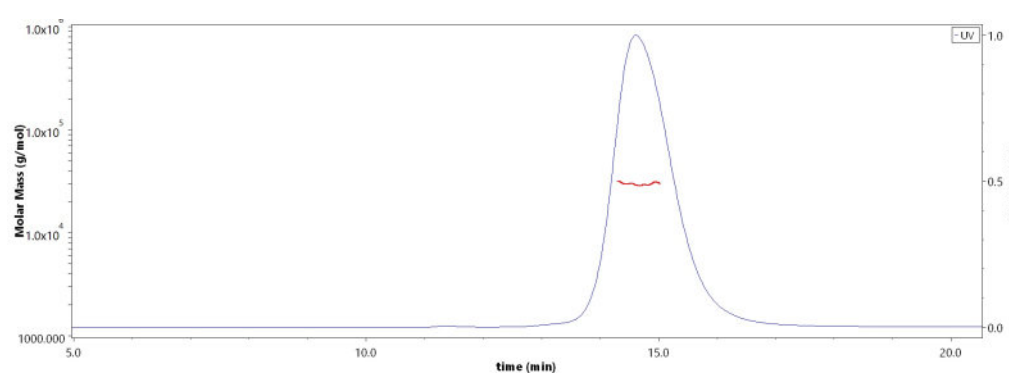
### SDS-PAGE



Human LTBR Protein, His,Avitag on SDS-PAGE under reducing (R) condition. The gel was stained with Coomassie Blue. The purity of the protein is greater than 90% (With [Star Ribbon Pre-stained Protein Marker](#)).

### Bioactivity-ELISA

### SEC-MALS

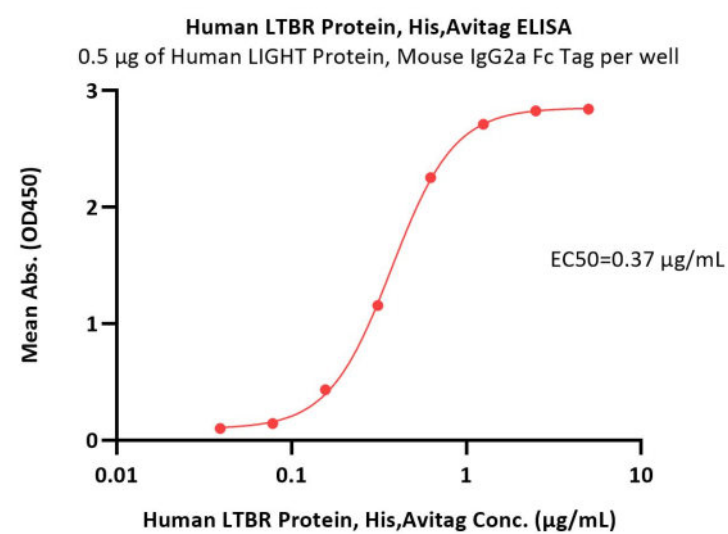
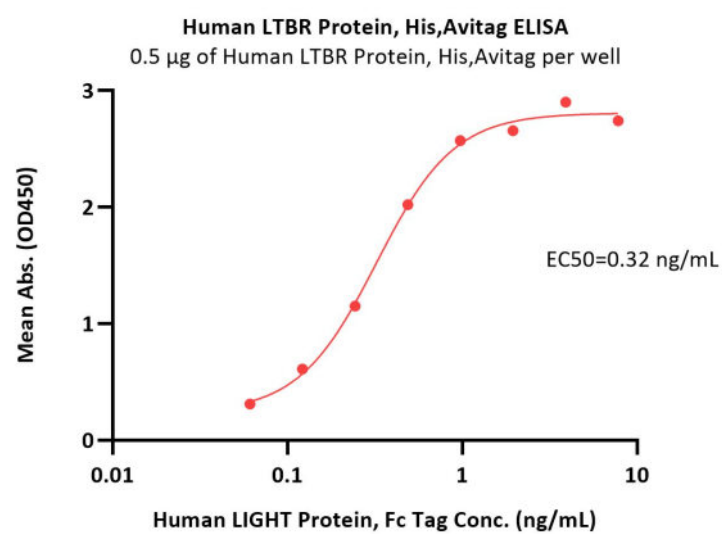


The purity of Human LTBR Protein, His,Avitag (Cat. No. LTR-H52E3) is more than 90% and the molecular weight of this protein is around 25-38 kDa verified by SEC-MALS.

[Report](#)

Discounts, Gifts,  
and more!





Immobilized Human LTBR Protein, His,Avitag (Cat. No. LTR-H52E3) at 5 µg/mL (100 µL/well) can bind Human LIGHT Protein, Fc Tag (Cat. No. LIT-H5269) with a linear range of 0.06-0.5 ng/mL (QC tested).

Immobilized Human LIGHT Protein, Mouse IgG2a Fc Tag (Cat. No. LIT-H5256) at 5 µg/mL (100 µL/well) can bind Human LTBR Protein, His,Avitag (Cat. No. LTR-H52E3) with a linear range of 0.039-0.625 µg/mL (Routinely tested).

## Background

Lymphotoxin-beta receptor (LTBR) is also known as Tumor necrosis factor receptor superfamily member 3 (TNFRSF3), Tumor necrosis factor receptor type III (TNF-RIII), which is a single-pass type I membrane protein containing four TNFR-Cys repeat regions. Except for interacting with HCV core protein, LTBR can not only associate with itself, but also can associate with TRAF3, TRAF4 and TRAF5. As the receptor for the heterotrimeric lymphotoxin containing LTA and LTB, and for TNFS14/LIGHT, LTBR promotes apoptosis via TRAF3 and TRAF5. Furthermore, LTBR may play a role in the development of lymphoid organs.

## Clinical and Translational Updates

Please contact us via [TechSupport@acrobiosystems.com](mailto:TechSupport@acrobiosystems.com) if you have any question on this product.

Discounts, Gifts,  
and more!

