

**Synonym**

NCR1,LY94,CD335,NK-p46,hNKp46

**Source**

Biotinylated Human NKp46 Protein, His Tag, primary amine labeling(NK6-H82E2) is expressed from human 293 cells (HEK293). It contains AA Gln 22 - Asn 254 (Accession # [O76036-6](#)).

Predicted N-terminus: Gln 22

**Molecular Characterization**

NKp46(Gln 22 - Asn 254) O76036-6	Poly-his
-------------------------------------	----------

This protein carries a polyhistidine tag at the C-terminus.

The protein has a calculated MW of 28.3 kDa. The protein migrates as 35-45 kDa under reducing (R) condition (SDS-PAGE) due to glycosylation.

**Labeling**

*The primary amines in the side chains of lysine residues and the N-terminus of the protein are conjugated with biotins using standard chemical labeling method. A standard biotin reagent (13.5 angstroms) is used in this product.*

**Protein Ratio**

Passed as determined by the HABA assay / binding ELISA.

**Endotoxin**

Less than 1.0 EU per µg by the LAL method.

**Purity**

&gt;95% as determined by SDS-PAGE.

**Formulation**

Lyophilized from 0.22 µm filtered solution in PBS, pH7.4 with trehalose as protectant.

Contact us for customized product form or formulation.

**Reconstitution**

Please see Certificate of Analysis for specific instructions.

*For best performance, we strongly recommend you to follow the reconstitution protocol provided in the CoA.*

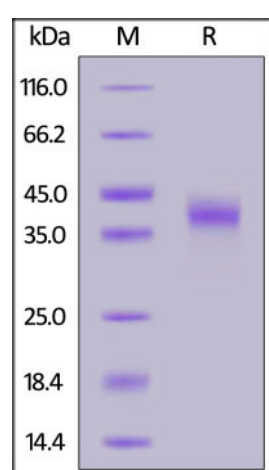
**Storage**

For long term storage, the product should be stored at lyophilized state at -20°C or lower.

*Please avoid repeated freeze-thaw cycles.*

This product is stable after storage at:

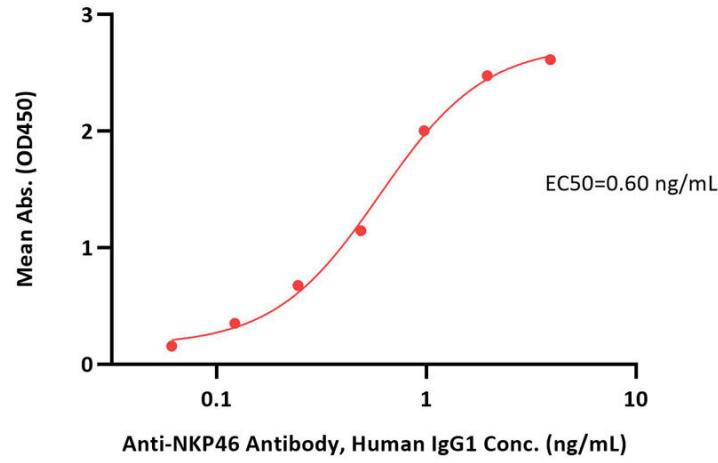
- -20°C to -70°C for 12 months in lyophilized state;
- -70°C for 3 months under sterile conditions after reconstitution.

**SDS-PAGE**

Biotinylated Human NKp46 Protein, His Tag, primary amine labeling on SDS-PAGE under reducing (R) condition. The gel was stained with Coomassie Blue. The purity of the protein is greater than 95%.

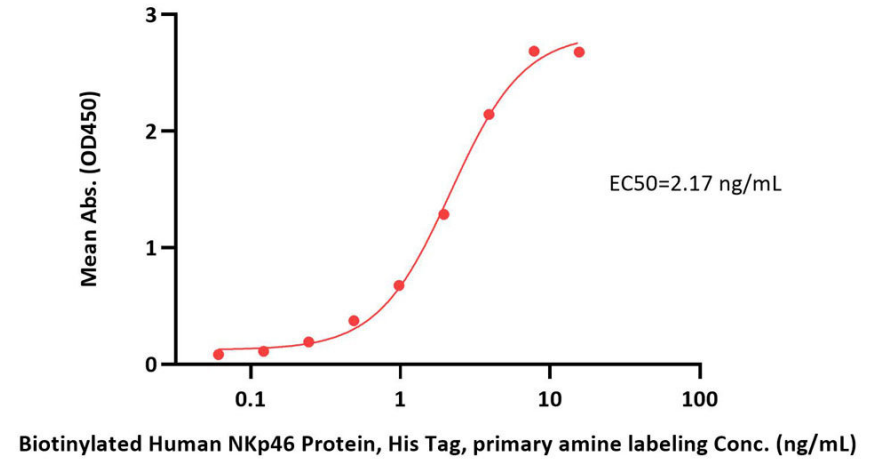
**Bioactivity-ELISA**

**Biotinylated Human NKp46 Protein, His Tag, primary amine labeling ELISA**  
0.1 µg of Biotinylated Human NKp46 Protein, His Tag, primary amine labeling per well



Immobilized Biotinylated Human NKp46 Protein, His Tag, primary amine labeling (Cat. No. NK6-H82E2) at 1 µg/mL (100 µL/well) on streptavidin (Cat. No. STN-N5116) precoated (0.5 µg/well) plate can bind Anti-NKP46 Antibody, Human IgG1 with a linear range of 0.1-1 ng/mL (QC tested).

**Biotinylated Human NKp46 Protein, His Tag, primary amine labeling ELISA**  
0.1 µg of Anti-NKP46 Antibody, Human IgG1 per well



Immobilized Anti-NKP46 Antibody, Human IgG1 at 1 µg/mL (100 µL/well) can bind Biotinylated Human NKp46 Protein, His Tag, primary amine labeling (Cat. No. NK6-H82E2) with a linear range of 0.1-4 ng/mL (Routinely tested).

## Background

Natural cytotoxicity triggering receptor 1 (NCR1) is also known as Natural killer cell p46-related protein (NK-p46), Lymphocyte antigen 94 homolog (LY94), CD antigen CD335, which belongs to the natural cytotoxicity receptor (NCR) family. NCR1 contains two Ig-like (immunoglobulin-like) domains. NCR1 interacts with CD247 and FCER1G. NCR1 / CD335 may contribute to the increased efficiency of activated natural killer (NK) cells to mediate tumor cell lysis.

## Clinical and Translational Updates

Please contact us via [TechSupport@acrobiosystems.com](mailto:TechSupport@acrobiosystems.com) if you have any question on this product.