

CHO/Human PD-L1 Stable Cell Line (High Expression) Development Service Data Sheet

CHO/Human PD-L1 Stable Cell Line (High Expression) Development Service

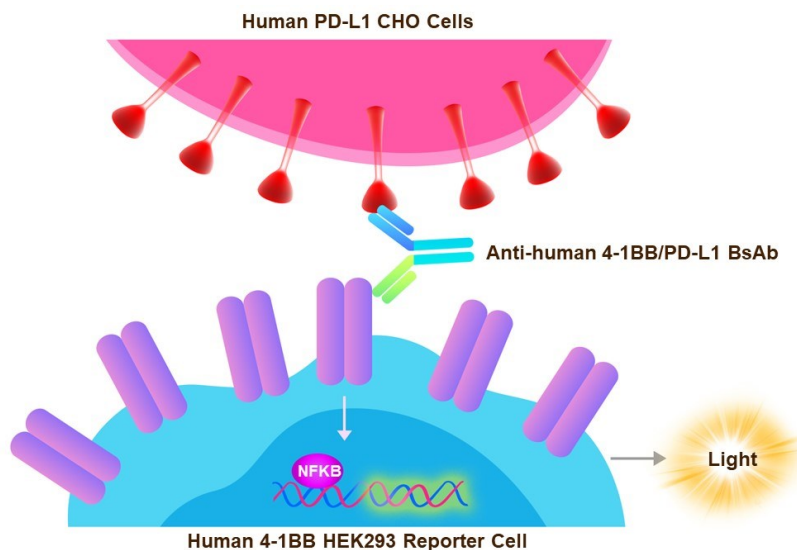
Catalog No.	Size
SCCHO-ATP077H	2 × (1 vial contains ~5×10 ⁶ cells)

• Description

The CHO/ Human PD-L1 Stable Cell Line was engineered to express full length human PD-L1 receptor (Gene ID: 29126), with different levels of PD-L1 expression (High, Medium, Low), which can be used to mimic cancer target cells with various PD-L1 expression levels. When co-cultured with Human 4-1BB (Luc) HEK293 Reporter Cell (Cat.No.CHEK-ATF073) and anti-human 4-1BB/PD-L1 BsAb, the anti-human 4-1BB/PD-L1 BsAb can be crosslinked, thereby strengthening 4-1BB pathway-activated luminescence.

Application

- Useful for cell-based PD-L1 binding assay
- Useful for PD-L1-mediated crosslinking in reporter gene assay



CHO/Human PD-L1 Stable Cell Line (High Expression) Development Service Data Sheet

• Cell Line Profile

Cell line	CHO/Human PD-L1 Stable Cell Line (High Expression)
Host Cell	CHO
Property	Adherent
Complete Growth Medium	F-12K + 10% FBS
Selection Marker	Puromycin (2 µg/mL)
Incubation	37°C with 5% CO ₂
Doubling Time	22-24 hours
Transduction Technique	Lentivirus

• Materials Required for Cell Culture

- F-12K Nutrient Mixture (Gibco, Cat.No.21127-022)
- Fetal bovine serum (CellMax, Cat.No.SA211.02)
- Puromycin (InvivoGen, Cat.No.ant-pr-5b)
- 0.25% Trypsin-EDTA (1X), Phenol Red (Gibco, Cat.No.25200-056)
- Penicillin-Streptomycin (Gibco, Cat.No.15140-122)
- Phosphate Buffered Saline (1X) (HyClone, Cat.No.SH30256.01)
- Complete Growth Medium: F-12K + 10% FBS
- Culture Medium: F-12K + 10% FBS, Puromycin (2 µg/mL)
- Freeze Medium: 90% FBS, 10% (V/V) DMSO
- T-75 Culture flask (Corning, 430641)
- Cryogenic storage vials (SARSTEDT, 72.379.007)
- Thermostat water bath
- Centrifuge
- Luna cell counter (Logos Biosystems, LUNA- II)
- CO₂ Incubator (Thermo, 3111)
- Biological Safety Cabinet (Thermo, 1389)

CHO/Human PD-L1 Stable Cell Line (High Expression) Development Service Data Sheet

• *Recovery*

1. Thaw the vial by gentle agitation in a 37°C water bath. To reduce the possibility of contamination, keep the cap out of the water. Thawing should be rapid (approximately 2 minutes).
2. Remove the vial from the water bath as soon as the contents are thawed, and decontaminate by spraying with 70% ethanol. All the operations from this point on should be carried out under strict aseptic conditions.
3. Transfer the vial contents to a centrifuge tube containing 4.0 mL complete growth medium and spin at approximately 1000 rpm for 5 minutes.
4. Resuspend cell pellet with 5 mL complete growth medium and transfer the cell suspension into T-75 flask containing 10-15 mL of pre-warmed complete growth medium.
5. Incubate at 37°C with 5% CO₂ incubator until the cells are ready to be split.

• *Subculture*

1. Remove and discard culture medium.
2. Wash the cells once with sterile PBS.
3. Add 3 mL of 0.25% trypsin to cell culture flask. Place the flask at 37°C for 5-7 minutes, until 90% of the cells have detached.
4. Add 6.0 to 8.0 mL of culture medium and aspirate cells by gently pipetting.
5. Add appropriate aliquots of the cell suspension to new culture vessel.
6. Incubate at 37°C with 5% CO₂ incubator.

Subcultivation Ratio: A subcultivation ratio of 1:6 to 1:10 is recommended.

Medium Renewal: Every 2 to 3 days.

CHO/Human PD-L1 Stable Cell Line (High Expression) Development Service Data Sheet**• Cryopreservation**

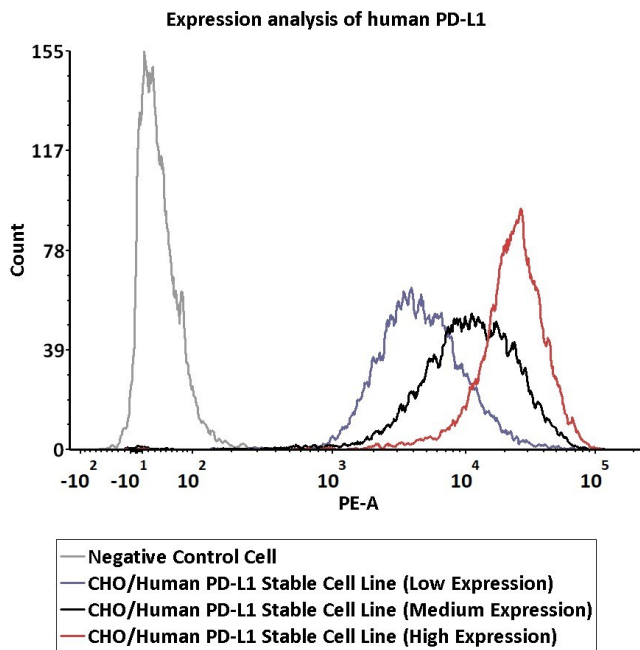
1. Remove and discard spent medium.
2. Detach cells from the cell culture flasks with 0.25% trypsin.
3. Centrifuge at 1000 rpm for 5 min at RT to pellet cells.
4. Resuspend the cell pellets with culture medium and count viable cells.
5. Centrifuge at 1000 rpm for 5 min at RT and resuspend cells in freezing medium to a concentration of 5×10^6 to 1×10^7 cells/mL.
6. Aliquot into cryogenic storage vials. Place vials in a programmable cooler or an insulated box placed in a -80°C freezer overnight, then transferring to liquid nitrogen storage.

• Storage

- **Product format:** Frozen
- **Storage conditions:** Liquid nitrogen immediately upon receipt

CHO/Human PD-L1 Stable Cell Line (High Expression) Development Service Data Sheet

• Receptor Assay



Catalog No.	Stable Cell Line	MFI for PD-L1 (PE)
SCCHO-ATP077L	CHO/Human PD-L1 Stable Cell Line (Low Expression)	4193.33
SCCHO-ATP077M	CHO/Human PD-L1 Stable Cell Line (Medium Expression)	10543.80
SCCHO-ATP077H	CHO/Human PD-L1 Stable Cell Line (High Expression)	22783.64

Fig1. Expression analysis of human PD-L1 on CHO/ Human PD-L1 Stable Cell Line by FACS. Cell surface staining using PE-labeled anti-human PD-L1 antibody was performed on CHO/Human PD-L1 Stable Cell Line with different expression levels: CHO/Human PD-L1 Stable Cell Line (Low Expression); CHO/Human PD-L1 Stable Cell Line (Medium Expression); CHO/Human PD-L1 Stable Cell Line (High Expression).

CHO/Human PD-L1 Stable Cell Line (High Expression) Development Service Data Sheet

• *License Disclosure*

This reporter cell is provided for research use only. This license does not permit you to share, distribute, sell, sublicense, or otherwise make this reporter cell available for use to other laboratories, departments, research institutions, hospitals, universities, or biotech companies. The license does not permit modification of this reporter cell in any way. Inappropriate use or distribution of this reporter cell will result in revocation of the license. Modifications of this cell line, transfer to another facility, or commercial use of the cells may require a separate license and additional fees. AcroBiosystems does not warrant the suitability of this reporter cell for any particular use, and does not accept any liability in connection with the handling or use of this reporter cell.

• *Related Products*

<u>Products</u>	<u>Cat.No.</u>
CHO/Human CD16a (158V) Stable Cell Line (Low Expression) Development Service	SCCHO-ATP059L
CHO/Human CD16a (158V) Stable Cell Line (Medium Expression) Development Service	SCCHO-ATP059M
CHO/Human CD16a (158V) Stable Cell Line (High Expression) Development Service	SCCHO-ATP059H
CHO/Human CD32b Stable Cell Line (Low Expression) Development Service	SCCHO-ATP060L
CHO/Human CD32b Stable Cell Line (Medium Expression) Development Service	SCCHO-ATP060M
CHO/Human CD32b Stable Cell Line (High Expression) Development Service	SCCHO-ATP060H
CHO/Human CD32a Stable Cell Line (Low Expression) Development Service	SCCHO-ATP061L
CHO/Human CD32a Stable Cell Line (Medium Expression) Development Service	SCCHO-ATP061M
CHO/Human CD32a Stable Cell Line (High Expression) Development Service	SCCHO-ATP061H
CHO/Human CD64 Stable Cell Line (Low Expression) Development Service	SCCHO-ATP062L
CHO/Human CD64 Stable Cell Line (Medium Expression) Development Service	SCCHO-ATP062M
CHO/Human CD64 Stable Cell Line (High Expression) Development Service	SCCHO-ATP062H
CHO/Human PD-L1 Stable Cell Line (Low Expression) Development Service	SCCHO-ATP077L
CHO/Human PD-L1 Stable Cell Line (Medium Expression) Development Service	SCCHO-ATP077M
Human 4-1BB (Luc) HEK293 Reporter Cell	CHEK-ATF073